

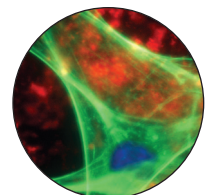
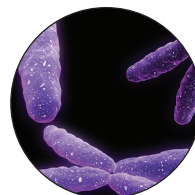
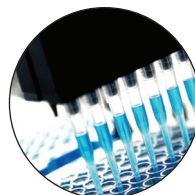
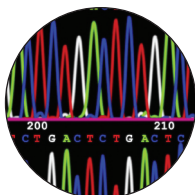


Association of Pathology Chairs

APC 2012 Meeting Program

July 10 - 13, 2012

Monterey Plaza Hotel & Spa, Monterey, California



www.apcprods.org/mtg/2012



ANNUAL REVIEWS

Celebrating 80 Years of Excellence

NOW AVAILABLE
ON MOBILE DEVICES!

Annual Review of Pathology: Mechanisms of Disease

Volume 7 • February 2012 • Online & In Print • <http://pathol.annualreviews.org>

Co-Editors: **Abul K. Abbas**, *University of California, San Francisco*
Stephen J. Galli, *Stanford University School of Medicine*
Peter M. Howley, *Harvard Medical School*

The *Annual Review of Pathology: Mechanisms of Disease*, in publication since 2006, covers significant advances in our understanding of the initiation and progression of important human diseases. Emphasis is placed on current and evolving concepts of disease pathogenesis, molecular genetic and morphologic alterations associated with diseases, and clinical significance.

Access this and all Annual Reviews journals via your institution at www.annualreviews.org.

Personal copies available at a reduced rate. Institutional site license options available. Contact Annual Reviews for details.

TABLE OF CONTENTS:

- *Instantiating a Vision: Creating the New Pathology Department at Stanford Medical School*, David Korn
- *The Life and Death of Epithelia During Inflammation: Lessons Learned from the Gut*, Stefan Koch, Asma Nusrat
- *The Cell Biology of Phagocytosis*, Ronald S. Flannagan, Valentin Jaumouillé, Sergio Grinstein
- *Human Microbiome in Health and Disease*, Kathryn J. Pflughoeft, James Versalovic
- *Merkel Cell Carcinoma: A Virus-Induced Human Cancer*, Yuan Chang, Patrick S. Moore
- *Molecular Pathogenesis of Ewing Sarcoma: New Therapeutic and Transcriptional Targets*, Stephen L. Lessnick, Marc Ladanyi
- *Mechanisms of Function and Disease of Natural and Replacement Heart Valves*, Frederick J. Schoen
- *Pathology of Demyelinating Diseases*, Bogdan F.Gh. Popescu, Claudia F. Lucchinetti
- *Molecular Mechanisms of Fragile X Syndrome: A Twenty-Year Perspective*, Michael R. Santoro, Steven M. Bray, Stephen T. Warren
- *Pathogenesis of NUT Midline Carcinoma*, Christopher A. French
- *Genetic Variation and Clinical Heterogeneity in Cystic Fibrosis*, Mitchell L. Drumm, Assem G. Ziady, Pamela B. Davis
- *The Pathogenesis of Mixed-Lineage Leukemia*, Andrew G. Muntean, Jay L. Hess
- *ATM and the Molecular Pathogenesis of Ataxia Telangiectasia*, Peter J. McKinnon
- *RNA Dysregulation in Diseases of Motor Neurons*, Fadia Ibrahim, Tadashi Nakaya, Zissimos Mourelatos
- *Tuberculosis Pathogenesis and Immunity*, Jennifer A. Philips, Joel D. Ernst
- *Psoriasis*, Gayathri K. Perera, Paola Di Meglio, Frank O. Nestle
- *Caveolin-1 and Cancer Metabolism in the Tumor Microenvironment: Markers, Models, and Mechanisms*, Federica Sotgia, Ubaldo E. Martinez-Outschoorn, Anthony Howell, Richard G. Pestell, Stephanos Pavlides, Michael P. Lisanti
- *Pathogenesis of Plexiform Neurofibroma: Tumor-Stromal/Hematopoietic Interactions in Tumor Progression*, Karl Staser, Feng-Chun Yang, D. Wade Clapp

ANNUAL REVIEWS • Guiding Scientists to Essential Research Since 1932

TEL: 800.523.8635 (US/CAN) • TEL: 650.493.4400 (WORLDWIDE) • FAX: 650.424.0910 (WORLDWIDE) • EMAIL: service@annualreviews.org



Association of Pathology Chairs 2012 Annual Meeting

July 10-13, 2012

Monterey Plaza Hotel & Spa, Monterey, California

Contents

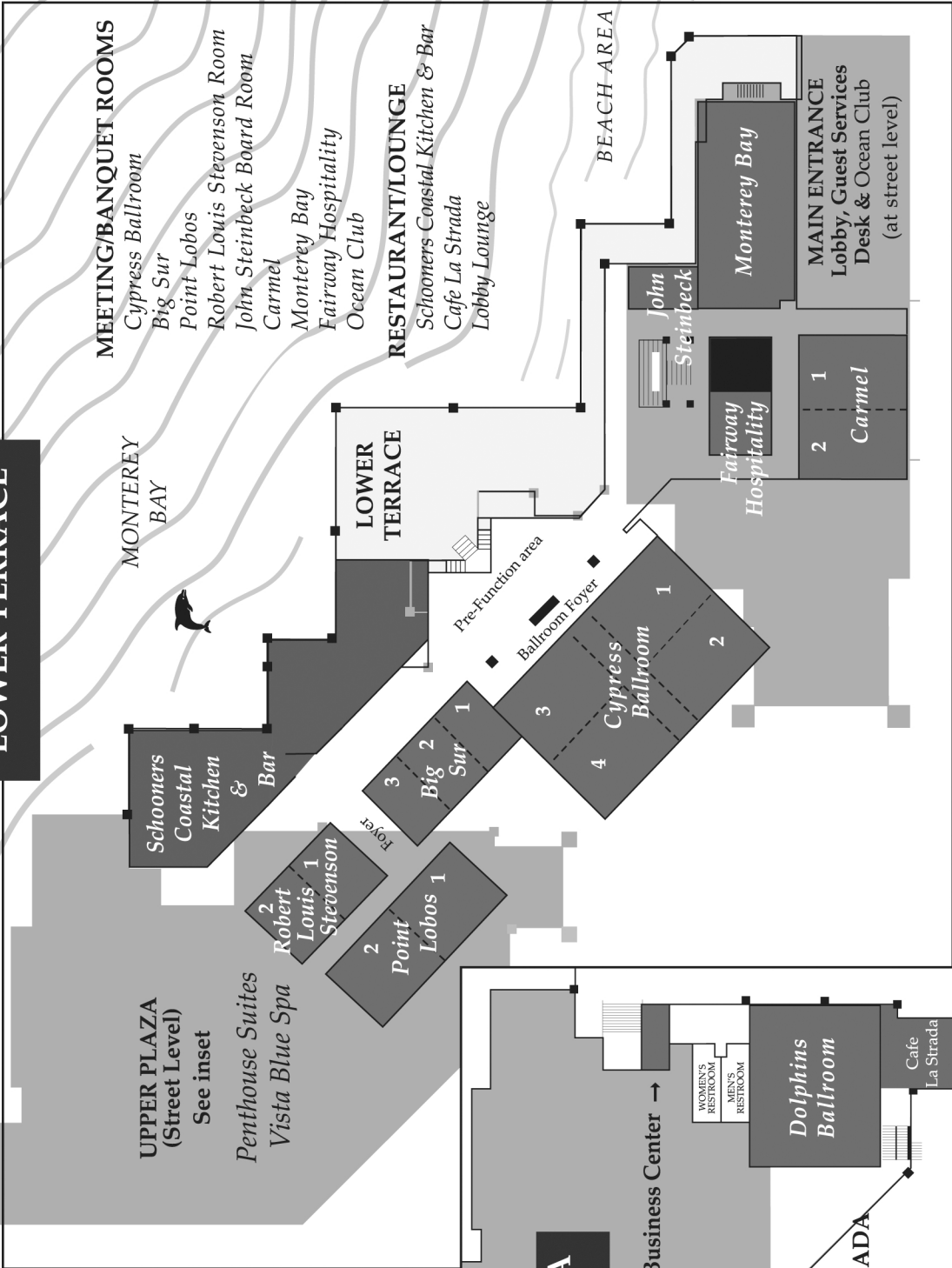
Hotel Maps.....	2
APC Council Members	5
CME Information.....	7
Exhibit Schedule/List of Exhibitors	9
APC Meeting Program	13
PRODS Meeting Program.....	23
PDAS Meeting Program	33
UMEDS Meeting Program.....	43
GMEAS Meeting Program	51

APC Code of Conduct

Code of Conduct: Events and listservs managed or held by the Association of Pathology Chairs (APC) exist for the professional development of members and for the advancement of academic pathology. Members and guests of events and listservs are expected to conduct themselves with professionalism, cordiality and respect. At a minimum, APC expects members and guests to abide by local and national laws, when attending or interacting at APC events and on APC listservs. Furthermore, APC leadership has developed a 'no tolerance' policy toward misconduct by members or guests that results in physical or emotional harm to fellow members, guests or employees of APC or event facilities. By registering for an event or participating on a listserv, participants are expected to uphold the spirit of this code of conduct, which is intended to support the professional benefits of APC affiliation. Complaints may be submitted confidentially to APC Council, by contacting the Executive Director by phone at 301-634-7880 or by email to apc@asip.org. If a complaint is brought to the attention of the Executive Director, the Conduct Review Committee of the APC Council shall be convened to determine, through a conscientious review of evidence, whether an individual has violated the code of conduct. If a violation of the code of conduct is judged to have occurred by a unanimous vote, the Committee may either issue a warning to correct the behavior (which will subsequently be monitored by the Committee) or the Committee may recommend that the individual will be excluded from participation in APC events and/or listservs for a period of no less than two years from the date of judgment. The individual may appeal the exclusion decision of the Committee to the entire APC Council by contacting the Executive Director; the appeal decision of the APC Council will be determined by a majority vote. If excluded from participation, at the end of two years, the individual may request in writing permission to participate in APC events and/or listservs, at which time the Conduct Review Committee may grant such permission. The individual may appeal the permission decision of the Committee to the entire APC Council by contacting the Executive Director; the permission decision of the APC Council will be determined by a majority vote.



LOWER TERRACE

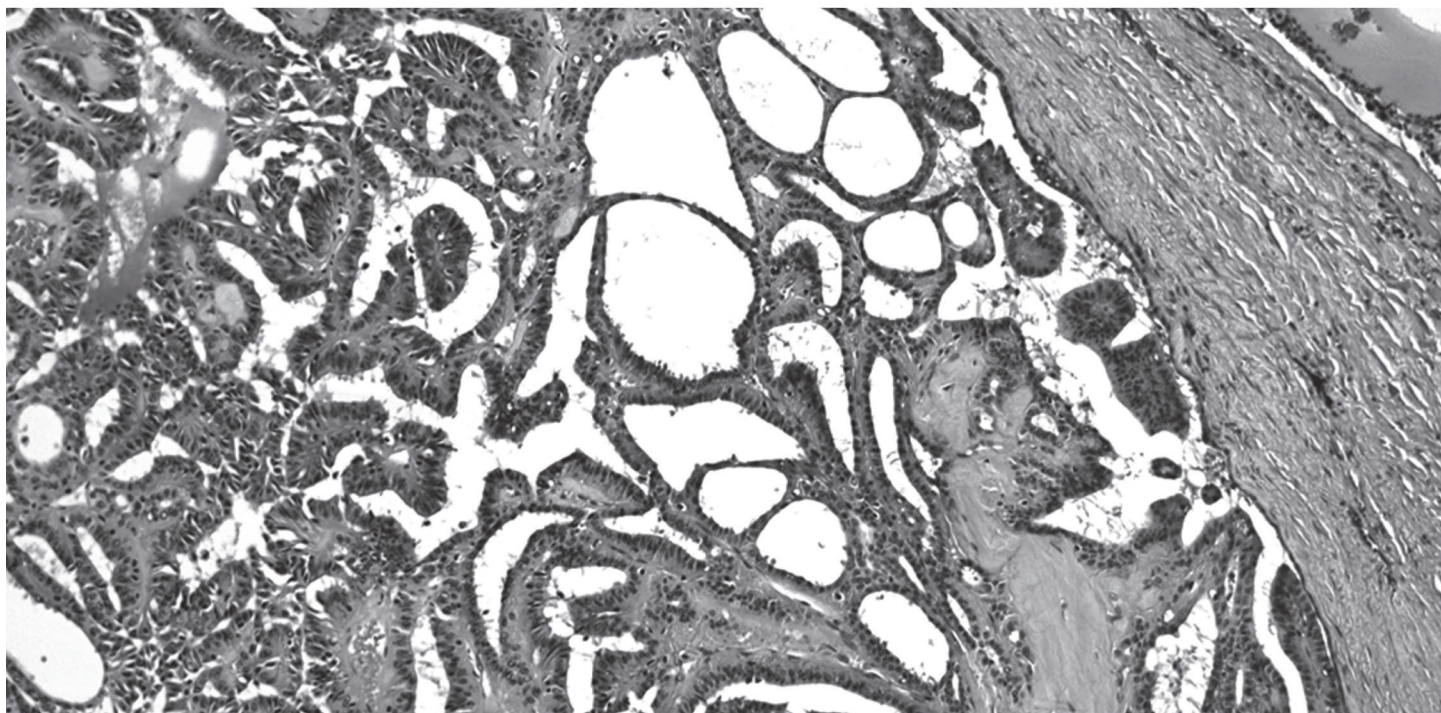


UPPER PLAZA (Street Level)

DOLPHINS BALLROOM
CAFE LA STRADA

BUSINESS CENTER
RETAIL SHOPS

Helping patients.
Helping you.



Our focus is your **patient.**

www.aruplab.com

ARUP's oncology test menu offers a wide variety of testing designed to answer important clinical questions regarding risk prediction, diagnosis and prognosis, monitoring, pharmacogenomics, and therapeutic triage of malignancies.

Named by G-2 Reports' *U.S. Laboratory Reference Testing Market Profile & Pricing Trends 2010* as Best Value for National Reference Laboratory (defined as service plus price).

OUR ONCOLOGY TEST MENU INCLUDES:

Septin 9 (SEPT9), Methylated DNA Detection by Real-Time PCR

KRAS, BRAF, NRAS, and PIK3CA mutation-detection testing

PMS2, MLH1, MSH2, and MSH6 promoter methylation

MSI by IHC and PCR

Gastrointestinal stromal tumor (*GIST*)

follow us!



visit our website for more information:

www.aruplab.com

ARUP is a nonprofit enterprise of the University of Utah and its Department of Pathology.

ARUP LABORATORIES

Together We Get Better Results

Rather than competing with its clients for physician office business, ARUP chooses instead to support clients' existing test menus by offering highly complex and unique lab tests, with accompanying consultative support, to enhance their abilities to provide laboratory services.

Discover Medical Billing Management designed for Lab and Pathology



kellison & company

- improve your cash flow
- reduce your administrative costs
- enhance your profitability through efficient billing management

medical billing management



(216) 464-5160 • (888) 694-6300 • www.kellison.com

Association of Pathology Chairs 2012 Annual Meeting

July 10-13, 2012

Monterey Plaza Hotel & Spa, Monterey, California

CME Organizing Committee/Council 2012 Annual Meeting:

PRESIDENT

Peter Jensen, MD
University of Utah School of Medicine

PRESIDENT-ELECT

Ann Thor, MD
University of Colorado at Denver

PAST PRESIDENT

J. Charles Jennette, MD
University of North Carolina - Chapel Hill

SECRETARY-TREASURER

Tristram Parslow, MD, PhD
Emory University Hospital

COUNCILOR-AT-LARGE

Donald Karcher, MD
George Washington University Medical Center

CHAIR, Undergraduate Medical Education Committee

Michael Prystowsky, MD, PhD
Albert Einstein College of Medicine

CHAIR, Graduate Medical Education Committee

J. Allan Tucker, MD
University of South Alabama Medical Center

CHAIR, Research Committee

Brian Smith, MD
Yale University

CHAIR, Practice & Management Committee

Gregory Threatte, MD
SUNY Upstate Medical University

CHAIR (Interim), Practice & Management Committee

Barbara Ducatman, MD
West Virginia University

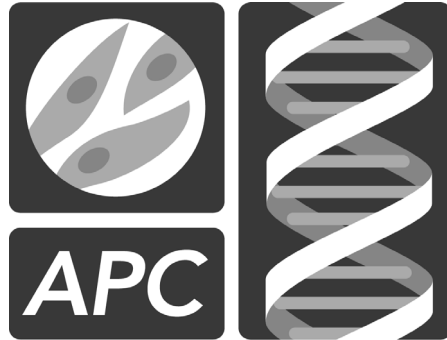
CHAIR, Advocacy Committee

Daniel Remick, MD
Boston University

Association of Pathology Chairs 2012 Annual Meeting

July 10-13, 2012

Monterey Plaza Hotel & Spa, Monterey, California



Association of Pathology Chairs

**Association of Pathology Chairs
"Promoting Excellence in Academic Pathology"**

APC Mission Statement

The Association of Pathology Chairs serves as a voice of academic pathology. The mission of the APC is to provide leadership and to advocate for the dynamic discipline of pathology. The APC provides education, training, information resources and networking opportunities for chairs, residency program directors, undergraduate medical educators, department administrators and graduate program coordinators.

Association of Pathology Chairs 2012 Annual Meeting

July 10-13, 2012

Monterey Plaza Hotel & Spa, Monterey, California

Continuing Medical Education (CME) Information



American Society for
Clinical Pathology



Association of
Pathology Chairs

CME Accreditation Statement: This activity (“APC 2012 Annual Meeting”) has been planned and implemented in accordance with the Essential Areas and policies of the Accreditation Council for Continuing Medical Education (ACCME) through the joint sponsorship of the American Society for Clinical Pathology (ASCP) and the Association of Pathology Chairs (APC). ASCP is accredited by the ACCME to provide continuing medical education for physicians.

The ASCP designates this “live” educational activity (“APC 2012 Annual Meeting”) for a maximum of 22.25 *AMA PRA Category 1 Credit(s)*[™]. Physicians should only claim credit commensurate with the extent of their participation in the activity.

CME applications are available online (www.apcprods.org) beginning **July 10, 2012**. Should you have questions, please contact the APC Office (301-634-7880; email apc@asip.org).

Meeting Objective/Target Audience: The APC 2012 Annual Meeting will focus on issues and challenges related to the ability of academic and hospital departments of pathology and laboratory medicine to provide clinical service, teaching, and training and to provide a forum for the exchange of research by scientists and investigators. Academic departments of pathology and laboratory medicine are facing significant pressures which adversely impact their ability to carry out their missions of teaching, clinical service, and research. This meeting focuses on undergraduate (medical school), graduate (residency and fellowship), and lifelong pathology education, as well as the development of educational programs and curricula for training of medical students, residents, fellows, and senior pathologists, and on mechanisms to provide quality clinical service to patients. At the completion of this activity, participants should be able to: 1) apply new methods and approaches being used by departments of pathology and laboratory medicine to accomplish their clinical service and teaching and training missions; 2) describe the Accreditation Council for Graduate Medical Education (ACGME) regulations governing graduate medical education and the accreditation of training programs; and 3) utilize information and data that lead to improvements in the delivery of pathology clinical and teaching services with the goal of enabling constructive interactions between pathologists and other health care practitioners.

The target audience is professionals (MD, DO, PhD) and others who serve as the academic, medical, scientific, and administrative leaders of departments of pathology and laboratory medicine in the United States and Canada.

Disclosure of Financial Relationships and Resolution of Conflicts of Interest: In order to ensure balance, independence, objectivity and scientific rigor in all its educational activities, and in accordance with ACCME Standards, the ASCP requires all individuals in a position to influence and/or control the content of ASCP CME activities to disclose to the ASCP and subsequently to learners whether they do or do not have any relevant financial relationships with proprietary entities producing health care goods or services that are discussed in CME activities. Faculty are asked to use generic names in any discussion of therapeutic options, to base patient care recommendations on scientific evidence and to base information regarding commercial products/services on scientific methods generally accepted by the medical community. All ASCP CME activities are evaluated by participants for the presence of any commercial bias and this input is used for subsequent CME planning decisions. The primary purpose of this activity is educational and the comments, opinions and/or recommendations expressed by the faculty or authors are their own and not those of ASCP.

Association of Pathology Chairs 2012 Annual Meeting

July 10-13, 2012

Monterey Plaza Hotel & Spa, Monterey, California

None of the organizers (as listed in the APC Program) of this educational activity disclosed a relevant financial relationship.

The following presenters have indicated relationships that have been reviewed and conflicts of interest resolved. If a presenter is not listed, then he/she had no relationship to disclose.

Invited Speaker Disclosures:

Mark Boguski, MD, PhD, Harvard Medical School

- Scientific Advisor, Cash & Stock Options Genome Quest
- Co-Founder, Equity Genome Health Solutions

Philip Chen, MD, PhD, University of Miami Miller School of Medicine

- Stock Holder Sonic Healthcare

John Gilbertson, MD, Massachusetts General Hospital

- Executive Advisory Board Member Sunquest

Richard Levenson, MD, University of California, Davis Medical Center

- Consultant Gooch & Housego

Kandice Marchant, MD, PhD, Cleveland Clinic

- Consultant Siemens

Guillermo Tearney, MD, PhD, Harvard Medical School

- Other - Receives Non-Clinical Sponsored Terumo Corporation
 Research Income
- Consultant, Royalties NinePoint
- Consultant, Royalties Samsung

PLEASE NOTE:

Please refer to the APC Meeting Evaluation and CME Application Workbook for a consolidated list of sessions that are eligible for *AMA PRA Category 1 Credit(s)*[™]. APC, PRODS and UMEDS sessions are eligible for *AMA PRA Category 1 Credit(s)*[™] except where noted in the meeting program. PDAS and CAMS sessions are not eligible for *AMA PRA Category 1 Credit(s)*[™]. Visiting exhibits is not an approved continuing medical education activity. Most meals are not approved for continuing medical education credit; however, some special breakfasts and lunches that have educational content are eligible for Continuing Medical Education credit as noted in your APC Meeting Evaluation and CME Application Workbook. The meeting program states those events that are not a Continuing Medical Education activity.

ONLINE CME Application and Meeting Evaluation

CME Applications will be submitted ONLINE. If you have not registered for CME by the end of the meeting, you will have an opportunity to register afterwards. Deadline for submission of CME Applications is September 15, 2012.

http://www.apcprods.org/mtg/2012/form_for_cme.cfm

If you are not applying for CME, we still value your comments. Please submit your Meeting Evaluation ONLINE.

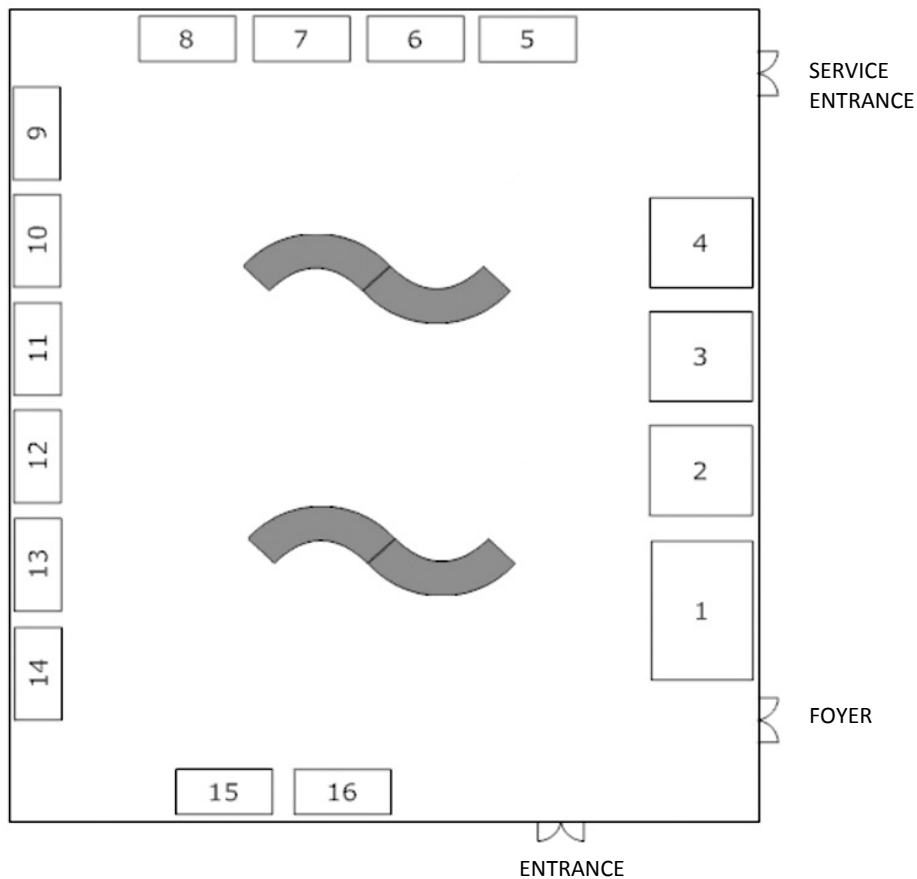
http://www.apcprods.org/mtg/2012/form_for_evaluation.cfm

Please use the Meeting Evaluation and CME Application Workbook to keep track of your attendance and comments to facilitate your online submission. You will receive an email with a link to the ONLINE CME Application / Meeting Evaluation website after the meeting.

Association of Pathology Chairs 2012 Annual Meeting

July 10-13, 2012

Monterey Plaza Hotel & Spa, Monterey, California



**EXHIBIT HALL – MONTEREY PLAZA HOTEL AND SPA
The Dolphins, Upper Plaza**

Diamond Partner

American Society for Clinical Pathology – #1

Gold Partners

ARUP Laboratories – #2

College of American Pathologists – #4

Kellison & Company – #3

Silver Partner

American Society for Investigative Pathology – #16

Exhibitors

AccuCore Group – #15

American Pathology Foundation – #6

APS Medical Billing – #10

Digital Pathology Association (DPA) – #11

HistoIndex – #12

Kubtec X-Ray – #7

Lippincott Williams & Wilkins/Wolters Kluwer Health – #13

McKesson – #8

NovoPath, Inc. – #5

Philips Digital Pathology – #14

Sakura Finetek USA, Inc. – #9

Please view the hotel map on page 2 for a complete overview of the meeting venue

Association of Pathology Chairs 2012 Annual Meeting

July 10-13, 2012

Monterey Plaza Hotel & Spa, Monterey, California

Exhibit Schedule (The Dolphins, Upper Plaza)

Tuesday, July 10, 2012

6:00pm – 9:00pm

Thursday, July 12, 2012

7:00am – 6:00pm

Wednesday, July 11, 2012

7:00am – 6:30pm

Thursday, July 12, 2012 – Last-Call Vendor Social

4:00pm – 6:00pm

DIAMOND Partner Description

American Society for Clinical Pathology (Booth #1)

ASCP is pleased to present (1) a report on the 2012 RISE and ASCP Fellowship and Job Market Survey with Dr. Henry Rinder and Jay Wagner, ASCP RISE Manager; (2) helpful online resources for program directors, including PRISE and Lab Management University; (3) an update from the Chair of the ASCP Resident Council; and (4) in collaboration with the American Pathology Foundation and APC/PRODS, a discussion group for teaching laboratory management.

For more information visit: www.ascp.org

GOLD Partner Descriptions

ARUP Laboratories (Booth #2)

Founded in 1984, ARUP Laboratories is a leading national reference laboratory and a nonprofit enterprise of the University of Utah and its Department of Pathology. ARUP offers more than 3,000 tests and test combinations, ranging from routine screening tests to esoteric molecular and genetic assays. ARUP serves clients across the United States.

For more information visit: www.aruplab.com

College of American Pathologists (Booth #4)

The College of American Pathologists (CAP) is the gold standard in laboratory accreditation and provides more than 580 proficiency testing products. The proficiency testing products range from very specialized esoteric to routine surveys, anatomic pathology, quality management, and educational programs for all your compliance needs.

For more information visit: www.cap.org

Kellison & Company (Booth #3)

Since 1976, the principals of Kellison & Company have specialized in providing comprehensive revenue cycle management services to Pathology practices including outreach, hospital-based AP practices, molecular labs and clinical professional component practices. Kellison's goal is to help improve cash flow, reduce administrative costs and enhance patient satisfaction. The company provides credentialing services, turning around denials and reporting options to help you monitor your current financial status, as well as to predict future trends.

For more information visit: www.kellison.com

Silver Partner Description

American Society for Investigative Pathology (Booth #16)

The American Society for Investigative Pathology (ASIP) promotes discovery, advancement and dissemination of knowledge in experimental pathology. We foster investigation into the pathogenesis of disease through meetings, publications and educational activities. *The American Journal of Pathology* is the official journal of ASIP and *The Journal of Molecular Diagnostics* is co-owned by ASIP with the Association for Molecular Pathology (AMP).

For more information visit: www.asip.org

Association of Pathology Chairs 2012 Annual Meeting

July 10-13, 2012

Monterey Plaza Hotel & Spa, Monterey, California

Exhibitor Descriptions

AccuCore Group (Booth #15)

AccuPathology for Quality Management / Peer Review / Document Management

Working with your LIS:

- Automation guides your staff through Peer Review
- Eliminates QA analysis crunch; no need for periodic QA analysis
- Integrates with LIS eliminating manual data entry
- Provides PI and Credentialing with vetted with Chairman weighting and approval
- Automates mandated OPPE and FPPE reporting
- Document Management to comply with CAP, The Joint Commission and OSHA requirements

For more information visit: www.accucoregroup.com

American Pathology Foundation (Booth #6)

The American Pathology Foundation (APF) is a professional society devoted to the business of pathology. Founded in 1959, the Foundation focuses on providing quality educational programs and management resources for members to help them stay current with scientific, regulatory and marketplace developments affecting the practice of pathology. APF membership is inclusive of pathologists, practice managers, pathology residents and academic programs.

For more information visit: www.apfconnect.org

APS Medical Billing (Booth #10)

APS Medical Billing is a premier pathology billing company that continues to provide expert billing and practice management solutions to pathology practices nationwide. Since 1960, APS has grown and currently provides services for over one hundred pathology practices in over 250 sites. Some of the services provided include expert ICD-9 and CPT coding, contract management, and comprehensive charge capture system to ensure our client's success.

For more information visit: www.apsmmedbill.com

American Society for Investigative Pathology (Booth #16)

The American Society for Investigative Pathology (ASIP) promotes discovery, advancement and dissemination of knowledge in experimental pathology. We foster investigation into the pathogenesis of disease through meetings, publications and educational activities. *The American Journal of Pathology* is the official journal of ASIP and *The Journal of Molecular Diagnostics* is co-owned by ASIP with the Association for Molecular Pathology (AMP).

For more information visit: www.asip.org

Digital Pathology Association (DPA) (Booth #11)

The mission of the Digital Pathology Association (DPA) is to facilitate education and awareness of digital pathology applications in healthcare and life sciences. Members are encouraged to share best practices and promote the use of the technology among colleagues in order to demonstrate efficiencies, awareness and its ultimate benefits to patient care.

For more information visit: www.digitalpathologyassociation.org

HistoIndex (Booth #12)

Delivering high-resolution characterization of collagen growth/regression in liver, renal and other fibrosis studies, HistoIndex introduces the new gold standard for quantitative assessment - the stain-free "Genesis" laser-scanning microscope! Biophotonic imaging techniques map out sectioned or 3D tissue samples with optical slicing, virtual staining and z-stacking. User-defined image orientation and zoom features provide limitless views and objective analyses with full quantification.

For more information visit: www.histoindex.com

Association of Pathology Chairs 2012 Annual Meeting

July 10-13, 2012

Monterey Plaza Hotel & Spa, Monterey, California

Kubtec X-Ray (Booth #7)

Kubtec manufactures high-contrast, digital X-ray systems for imaging excised breast tissue, body parts and fetuses in Pathology. Our product line includes the only specimen radiography system with a 17" x 17" detector. Kubtec's software tools interface with most Pathology software suites. Our systems are simple to operate with images available in seconds for increased efficiency in the Pathology lab.

For more information visit: www.kubtec.com

Lippincott Williams & Wilkins/Wolters Kluwer Health (Booth #13)

Wolters Kluwer Health (Philadelphia, PA) is a leading global provider of information, business intelligence and point-of-care solutions for the healthcare industry. Major brands include traditional publishers of medical and drug reference tools, journals and textbooks, such as [Lippincott Williams & Wilkins](#); and electronic information providers, such as [Ovid](#), [UpToDate](#), [Medi-Span](#), [Facts & Comparisons](#), [Pharmacy OneSource](#) and [ProVation Medical](#).

For more information visit: www.lww.com

McKesson (Booth #8)

Keep your practice healthy so your patients stay healthy too. Built with cloud computing technology, McKesson Practice Complete combines a certified electronic medical record, with a fully integrated practice management and billing solution – all for one predictable monthly fee. With Practice Management Complete, you can meet meaningful use requirements without a high up-front investment while collecting more of what you earn.

For more information visit: www.mckesson.com

NovoPath, Inc. (Booth #5)

NovoPath™'s ONC-CCHIT EMR Certified, easy-to-use and cost affordable Anatomic Pathology LIS is tailored to your lab by offering modules for, Molecular, FISH, Cytogenetics, and Flow. NovoPath's Outreach Modules will deliver combined reports via Fax, Remote Printing, HL7 Interfaces, and the Web, to your Client's offices, EMRs and hand held devices such as Android and iPhones, iPads and iOS Devices.

For more information visit: www.novopath.com

Philips Digital Pathology (Booth #14)

As a world leader in imaging systems, radiology information systems (RIS) and PACS, Philips is committed to providing solutions that maximize the use of clinicians' time, making their work more efficient, more productive and helping them to deliver outstanding care. Working with leading pathology departments, Philips Digital Pathology has designed a sophisticated yet easy-to-use integrated digital pathology solution that offers exceptional image quality and superior overall performance.

For more information visit: www.philips.com/digitalpathology

Sakura Finetek USA, Inc. (Booth #9)

Sakura Finetek USA, Inc., introduces a hybrid digital microscope/scanner, Sakura® VisionTek™, into its line of products that includes the renowned Tissue-Tek® and Cyto-Tek® brands. It is the ideal tool to manage daily workload while significantly impacting patient care and your business. Sakura® VisionTek™ provides pathologists with the control and choices needed in the digital age. Please come by our exhibit to see Sakura® VisionTek™.

For more information visit: www.sakuraus.com

Association of Pathology Chairs 2012 Annual Meeting

July 10-13, 2012

Monterey Plaza Hotel & Spa, Monterey, California

APC CHAIRS PROGRAM

Tuesday, July 10, 2012

GENERAL INFORMATION:

6:00 pm - 9:00 pm **Meeting Registration**
The Dolphins Foyer, Upper Plaza

6:00 pm - 9:00 pm **Exhibit Hours**
The Dolphins, Upper Plaza

PROGRAM INFORMATION:

3:00 pm - 6:00 pm **Health Information Technology Primer**
Cypress Ballroom, Lower Terrace

3:00 pm - 3:20 pm Basic Technology in Health Information Technology (HIT)
John Sinard, MD, PhD, Yale University

3:20 pm - 3:35 pm Interfaces, Middleware, Networks, Databases, etc.
John Sinard, MD, PhD, Yale University

3:35 pm - 3:55 pm Overview of the Laboratory Information Systems (LIS) and Electronic Health
Record (EHR) System
John Sinard, MD, PhD, Yale University

3:55 pm - 4:10 pm Basic Digital Imagery, Whole Slide Imaging, Telemicroscopy, etc.
John Sinard, MD, PhD, Yale University

4:10 pm - 4:20 pm HIT Security and Confidentiality
John Sinard, MD, PhD, Yale University

4:20 pm - 4:30 pm Q&A

4:30 pm - 4:50 pm Break (In Room)

4:50 pm - 5:10 pm Laboratory Data Formatting and Presentation
Rajesh Dash, MD, Duke University

5:10 pm - 5:25 pm Transmission and Warehousing of Laboratory and Pathology Data: Health
Information Exchanges
Rajesh Dash, MD, Duke University

Association of Pathology Chairs 2012 Annual Meeting

July 10-13, 2012

Monterey Plaza Hotel & Spa, Monterey, California

5:25 pm - 5:50 pm Genomic Data Analysis in Clinical Practice and Research
Mark Boguski, MD, PhD, Beth Israel Deaconess Medical Center

5:50 pm - 6:00 pm Q&A

6:00 pm - 9:00 pm **Reception, Exhibits**
[This is not a Continuing Medical Education activity]
The Dolphins, Upper Plaza

Wednesday, July 11, 2012

GENERAL INFORMATION:

7:00 am - 6:30 pm **Meeting Registration**
Cypress Ballroom Foyer, Lower Terrace

7:00 am - 6:30 pm **Exhibit Hours**
The Dolphins, Upper Plaza

8:30 am - 10:00 am **SPICE (Spouse and Guest) Group Meeting**
Schooners Coastal Kitchen and Bar, Lower Terrace

PROGRAM INFORMATION:

7:00 am - 8:00 am **Breakfast**
[This is not a Continuing Medical Education activity]
The Dolphins, Upper Plaza

8:00 am - 10:00 am **HIT/Informatics Thematic Program - Practice and Management**
Cypress Ballroom, Lower Terrace

8:00 am - 8:25 am The Evolution of the Laboratory Information System, the Factors that will
Impact the Next Generation LIS
John Gilbertson, MD, Massachusetts General Hospital

8:25 am - 8:50 am The Pathology World-View as a Cornerstone of the Next-Generation EHR:
Implications for Design, Procurement and Management
Ulysses Balis, MD, University of Michigan

8:50 am - 9:10 am Leveraging Pathology Informatics in the HIT Evolution: Opportunities and
Positioning in the Health Care Marketplace
Philip Chen, MD, PhD, University of Miami

9:10 am - 9:30 am HIT and Informatics in the Accountable/Coordinated Care Era
James Crawford, MD, PhD, Hofstra North Shore-LIJ School of Medicine

9:30 am - 10:00 am Q&A

Association of Pathology Chairs 2012 Annual Meeting

July 10-13, 2012

Monterey Plaza Hotel & Spa, Monterey, California

- 10:00 am - 10:30 am** **Break, Exhibits**
[This is not a Continuing Medical Education activity]
The Dolphins, Upper Plaza
- 10:30 am - 12:00 pm** **HIT/Informatics Thematic Program - Education**
Cypress Ballroom, Lower Terrace
- 10:30 am - 10:55 am Informatics as Both a Subspecialty (and an Intrinsic Component of)
Pathology: The Structure and Curriculum of Informatics Fellowships and
Residencies
John Gilbertson, MD, Massachusetts General Hospital
- 10:55 am - 11:20 am Cutting-Edge Imaging Technology in Pathology: Whole Slide Imaging,
Telemicroscopy, and In-Vivo Microscopy
Guillermo Tearney, MD, PhD, Massachusetts General Hospital
- 11:20 am - 11:35 am Integrating Health Information Technology and Pathology Education: The
UC Davis Experience
Michael Hogarth, MD, University of California, Davis
Regina Gandour-Edwards, MD, University of California, Davis
- 11:35 am - 12:00 pm Q&A
- 12:00 pm - 1:00 pm** **Chairs Networking Lunch**
[This is not a Continuing Medical Education activity]
Lower Terrace
- 1:00 pm - 3:00 pm** **HIT/Informatics Thematic Program - Research**
Cypress Ballroom, Lower Terrace
- 1:00 pm - 1:25 pm Entering the Era of Genomic Medicine: Opportunities and Challenges
*Eric Green, MD, PhD, National Institutes of Health/National Human Genome
Research Institute*
- 1:25 pm - 1:50 pm Whole Slide Imaging and Its Impact on Research and Care Delivery
Yakuko Yagi, PhD, Massachusetts General Hospital
- 1:50 pm - 2:15 pm In-Vivo Optical Imaging, Automated Image Processing, and Artificial
Intelligence to Detect Neoplasia and Pre-Neoplasia
Richard Levenson, MD, University of California, Davis
- 2:15 pm - 2:40 pm The Microbiome and the Use of Higher Order Data in the Study of Chronic
Inflammatory Disease
Jonathan Braun, MD, PhD, University of California, Los Angeles
- 2:40 pm - 3:00 pm Q&A

Association of Pathology Chairs 2012 Annual Meeting

July 10-13, 2012

Monterey Plaza Hotel & Spa, Monterey, California

- 3:00 pm - 3:30 pm** **Break, Exhibits**
[This is not a Continuing Medical Education activity]
The Dolphins, Upper Plaza
- 3:30 pm - 4:10 pm** **HIT/Informatics Thematic Program - Advocacy**
[This is not a Continuing Medical Education activity]
Cypress Ballroom, Lower Terrace
- 3:30 pm - 3:50 pm The National Perspective on Clinical Decision Support
Jacob Reider, MD, Acting Chief Medical Officer, Office of the National Coordinator for Health Information Technology
- 3:50 pm - 4:10 pm Opportunities for Pathology in HIT-Enabled Accountable Care
S. Lawrence Kocot, JD, LL.M., MPA, Deputy Director, Engelberg Center for Health Care Reform, The Brookings Institution
- 4:10 pm - 5:15 pm** **Cooperating Society Liaison Panel: Focused Responses to HIT and Informatics Issues**
Cypress Ballroom, Lower Terrace
- 4:10 pm - 4:15 pm ABP Liaison Response to Keynotes
Betsy Bennett, MD, PhD, The American Board of Pathology
- 4:15 pm - 4:20 pm ACLPS Liaison Response to Keynotes
Eric D. Spitzer, MD, PhD, SUNY at Stony Brook
- 4:20 pm - 4:25 pm ASCP Liaison Response to Keynotes
C. Bruce Alexander, MD, University of Alabama, Birmingham
- 4:25 pm - 4:30 pm ASIP Liaison Response to Keynotes
James Musser, MD, PhD, The Methodist Hospital System
- 4:30 pm - 4:35 pm ADASP Liaison Response to Keynotes
Peter Humphrey, MD, PhD, Washington University
- 4:35 pm - 4:40 pm CAP Liaison Response to Keynotes
Stanley J. Robboy, MD, FCAP, FFPATH RCPI (hon), Duke University
- 4:40 pm - 4:45 pm USCAP Liaison Response to Keynotes
Linda Ferrell, MD, University of California, San Francisco
- 4:45 pm - 5:15 pm Q&A
- 5:15 pm - 6:30 pm** **Break, Exhibits**
[This is not a Continuing Medical Education activity]
The Dolphins, Upper Plaza

Association of Pathology Chairs 2012 Annual Meeting

July 10-13, 2012

Monterey Plaza Hotel & Spa, Monterey, California

6:30 pm - 8:00 pm	Opening Dinner Wine Sponsored by American Society for Clinical Pathology (APC Diamond Partner) <i>[This is not a Continuing Medical Education activity]</i> Cypress Ballroom, Lower Terrace
7:15 pm - 7:20 pm	Welcome/Moment of Silence/Sponsorship Acknowledgement
7:20 pm - 7:30 pm	Undergraduate Medical Education Distinguished Teaching Award Presentation <i>John Woosley, MD, PhD, University of North Carolina at Chapel Hill</i>
7:30 pm - 7:40 pm	Graduate Medical Education Distinguished Teaching Award Presentation <i>Betsy Bennett, MD, PhD, American Board of Pathology</i>
7:40 pm - 8:00 pm	APC Distinguished Service Award Presentations <i>Nelson Fausto, MD (posthumously)</i> <i>Clive Taylor, MD, PhD, University of Southern California</i>
8:00 pm - 9:00 pm	Sunset Sweets (Dessert Social Outdoors - Weather Permitting) <i>[This is not a Continuing Medical Education activity]</i> Terrace, Upper Plaza

Thursday, July 12, 2012

GENERAL INFORMATION:

7:00 am - 6:00 pm	Meeting Registration Cypress Ballroom Foyer, Lower Terrace
7:00 am - 6:00 pm	Exhibit Hours The Dolphins, Upper Plaza
8:30 am - 10:00 am	SPICE (Spouse and Guest) Group Meeting Schooners Coastal Kitchen and Bar, Lower Terrace

PROGRAM INFORMATION:

7:00 am - 8:00 am	Chairs/UMEDS/PRODS Breakfast Cypress Ballroom, Lower Terrace
7:00 am - 8:00 am	LCME Update <i>Barbara Barzansky, PhD, MHPE, American Medical Association</i>
8:00 am - 10:00 am	Joint Undergraduate and Graduate Medical Education Session Cypress Ballroom, Lower Terrace

Association of Pathology Chairs 2012 Annual Meeting

July 10-13, 2012

Monterey Plaza Hotel & Spa, Monterey, California

- 8:00 am - 8:30 am Medical Student Education in Molecular and Genomic Pathology
Harry Ostrer, MD, Albert Einstein College of Medicine
- 8:30 am - 9:00 am Resident and Fellow Education in Molecular and Genomic Pathology
Karen Kaul, MD, PhD, NorthShore University HealthSystem
- 9:00 am - 9:30 am Molecular and Genomic Pathology: What Practicing Pathologists Will Need to Know
John Pfeifer, MD, PhD, Washington University
- 9:30 am - 10:00 am Q&A
- 10:00 am - 10:30 am Break, Exhibits**
[This is not a Continuing Medical Education activity]
The Dolphins, Upper Plaza
- 10:30 am - 12:30 pm Joint Practice and Management Session**
Cypress Ballroom, Lower Terrace
- 10:30 am - 11:00 am Introduction and Review of Survey
Barbara Ducatman, MD, West Virginia University
- 11:00 am - 11:15 am Value of Survey Data for Departments
Martha Miers, MS, Vanderbilt University
- 11:15 am - 11:30 am Discussion
- 11:30 am - 11:45 am Resident and Fellowship Funding Issues
Suzanne Powell, MD, The Methodist Hospital System
- 11:45 am - 12:00 pm Pathology Departments and ACOs
James Crawford, MD, PhD, Hofstra North Shore-LIJ School of Medicine
- 12:00 pm - 12:15 pm Academic Health Center Integration and Pathology Funding Models
A. Julian Garvin, MD, PhD, Wake Forest University
- 12:15 pm - 12:30 pm Discussion
- 12:30 pm - 2:00 pm Lunch/Discussion Groups**
- 12:30 pm - 2:00 pm Part A Transfer – Professional Component Billing
The Ocean Club, Upper Plaza
J. Charles Jennette, MD, University of North Carolina at Chapel Hill
Kandice Marchant, MD, PhD, Cleveland Clinic
A. Julian Garvin, MD, PhD, Wake Forest University
Dani Zander, MD, Pennsylvania State College
Fred Gorstein, MD, Thomas Jefferson University

Association of Pathology Chairs 2012 Annual Meeting

July 10-13, 2012

Monterey Plaza Hotel & Spa, Monterey, California

- 12:30 pm - 2:00 pm Benchmarking
Carmel 1 & 2, Lower Terrace
Barbara Ducatman, MD, West Virginia University
Martha Miers, MS, Vanderbilt University
Tristram Parslow, MD, PhD, Emory University
Robert Hunter, MD, PhD, University of Texas, Houston
Marjel Whitmore, MPA, Creighton University
- 12:30 pm - 2:00 pm Milestones
Point Lobos 1, Lower Terrace
Wesley Naritoku, MD, PhD, University of Southern California
Seena Aisner, MD, UMDNJ - New Jersey Medical School
Steven Nestler, PhD, Accreditation Council for Graduate Medical Education
- 12:30 pm - 2:00 pm New Roles for Pathologists and New Payment Models
Cypress Ballroom, Lower Terrace
Donald Karcher, MD, George Washington University
James Crawford, MD, PhD, Hofstra North Shore-LIJ School of Medicine
W. Stephen Black-Schaffer, MD, Massachusetts General Hospital
Doug Toothman, MPA, PA, West Virginia University
Ira Sussman, MD, Albert Einstein College of Medicine
Marcia McCall, MBA, CPA, Wake Forest University
- 12:30 pm - 2:00 pm UME/LCME: Stayin' Alive
John Steinbeck, Lower Terrace
J. Allan Tucker, MD, University of South Alabama
Regina Gandour-Edwards, MD, University of California, Davis
Robert Reddick, MD, University of Texas Health Science Center
- 12:30 pm - 2:00 pm Biorepositories
Fairway, Lower Terrace
Daniel Remick, MD, Boston University
Mark Sobel, MD, PhD, American Society for Investigative Pathology
- 12:30 pm - 2:00 pm Pathology Education Funding (GME, UME, Pre- and Post-doctoral)
Big Sur 2 & 3, Lower Terrace
Robert Hoffman, MD, PhD, Vanderbilt University
Gayle Winters, MD, Brigham & Women's Hospital
Jennifer Hunt, MD, MEd, University of Arkansas
Michael Prystowsky, MD, PhD, Albert Einstein College of Medicine
- 12:30 pm - 2:00 pm Faculty Certification, Recertification and Remediation
Point Lobos 2, Lower Terrace
Suzanne Powell, MD, The Methodist Hospital System
Betsy Bennett, MD, PhD, American Board of Pathology
Rebecca Johnson, MD, Berkshire Health Systems
Kymerly Gyure, MD, West Virginia University

Association of Pathology Chairs 2012 Annual Meeting

July 10-13, 2012

Monterey Plaza Hotel & Spa, Monterey, California

12:30 pm - 2:00 pm Methods for Effective Teaching of Laboratory Management during Residency Training
Monterey Bay, Lower Terrace
Peter Jensen, MD, University of Utah
Ronald Weiss, MD, ARUP Laboratories
Christopher Stowell, MD, PhD, Massachusetts General Hospital

2:00 pm - 3:00 pm Chair Committee Meetings

2:00 pm - 3:00 pm Undergraduate Medical Education Committee
Point Lobos 2, Lower Terrace
Michael Prystowsky, MD, PhD, Albert Einstein College of Medicine

2:00 pm - 3:00 pm Graduate Medical Education Committee
Point Lobos 1, Lower Terrace
J. Allan Tucker, MD, University of South Alabama

2:00 pm - 3:00 pm Practice & Management Committee
The Ocean Club, Upper Plaza
Barbara Ducatman, MD, West Virginia University

2:00 pm - 3:00 pm Research Committee
Big Sur 2 & 3, Lower Terrace
Brian Smith, MD, Yale University

3:00 pm - 4:00 pm Networking Break

[This is not a Continuing Medical Education activity]

3:00 pm - 4:30 pm Leadership Development and Diversity Ad Hoc Committee Meeting

[This is not a Continuing Medical Education activity]

Robert Louis Stevenson 1 & 2, Lower Terrace
Fred Gorstein, MD, Thomas Jefferson University
Ann Thor, MD, University of Colorado, Denver

4:00 pm - 6:00 pm Exhibits - "Last Call" Vendor Social with Prize Drawing

[This is not a Continuing Medical Education activity]

The Dolphins, Upper Plaza

Friday, July 13, 2012

PROGRAM INFORMATION:

8:00 am - 9:30 am Breakfast/Joint Advocacy Session

Cypress Ballroom, Lower Terrace

8:00 am - 9:30 am Joint Advocacy Session (For All Attendees)
Daniel Remick, MD, Boston University

Association of Pathology Chairs 2012 Annual Meeting

July 10-13, 2012

Monterey Plaza Hotel & Spa, Monterey, California

9:30 am - 10:30 am

Laboratory Medicine and Management Training Forum

Cypress Ballroom, Lower Terrace

9:30 am - 9:40 am

Update on the CDC Survey of Undergraduate Medical Education in Laboratory Medicine

Brian Smith, MD, Yale University

9:40 am - 9:50 am

Methods for Effective Teaching of Laboratory Management during Residency Training

Christopher Stowell, MD, PhD, Massachusetts General Hospital

Ronald Weiss, MD, ARUP Laboratories

9:50 am - 10:00 am

Addressing the Challenges of Training in 3 to 4 Years

Michael Laposata, MD, PhD, Vanderbilt University

10:00 am - 10:10 am

Evolving from Resident to Pathologist

Richard Horowitz, MD, Veterans Affairs Greater Los Angeles Healthcare System

10:10 am - 10:30 am

Bridging the Chasm between Training and Practice: Preparing Students and Residents for Reality - A Moderated Panel Discussion

Christopher Stowell, MD, PhD, Massachusetts General Hospital

Michael Laposata, MD, PhD, Massachusetts General Hospital

Richard Horowitz, MD, Veterans Affairs Greater Los Angeles Healthcare System

Brian Smith, MD, Yale University

10:30 am - 11:30 am

Business Meeting

[This is not a Continuing Medical Education activity]

Cypress Ballroom, Lower Terrace

10:30 am - 11:30 am

APC Business Meeting (Chairs Only)

Presided by Peter Jensen, MD, University of Utah

Chairs Program Adjourns at 11:30 am

Association of Pathology Chairs 2012 Annual Meeting

July 10-13, 2012

Monterey Plaza Hotel & Spa, Monterey, California

NOTES:

Association of Pathology Chairs 2012 Annual Meeting

July 10-13, 2012

Monterey Plaza Hotel & Spa, Monterey, California

PRODS PROGRAM

Tuesday, July 10, 2012

GENERAL INFORMATION:

6:00 pm - 9:00 pm **Meeting Registration**
The Dolphins Foyer, Upper Plaza

6:00 pm - 9:00 pm **Exhibit Hours**
The Dolphins, Upper Plaza

PROGRAM INFORMATION:

3:00 pm - 6:00 pm **Health Information Technology Primer**
Cypress Ballroom, Lower Terrace

3:00 pm - 3:20 pm Basic Technology in Health Information Technology (HIT)
John Sinard, MD, PhD, Yale University

3:20 pm - 3:35 pm Interfaces, Middleware, Networks, Databases, etc.
John Sinard, MD, PhD, Yale University

3:35 pm - 3:55 pm Overview of the LIS and Electronic Health Record (EHR) System
John Sinard, MD, PhD, Yale University

3:55 pm - 4:10 pm Basic Digital Imagery, Whole Slide Imaging, Telemicroscopy, etc.
John Sinard, MD, PhD, Yale University

4:10 pm - 4:20 pm HIT Security and Confidentiality
John Sinard, MD, PhD, Yale University

4:20 pm - 4:30 pm Q&A

4:30 pm - 4:50 pm Break (In Room)

4:50 pm - 5:10 pm Laboratory Data Formatting and Presentation
Rajesh Dash, MD, Duke University

5:10 pm - 5:25 pm Transmission and Warehousing of Laboratory and Pathology Data: Health
Information Exchanges
Rajesh Dash, MD, Duke University

5:25 pm - 5:50 pm Genomic Data Analysis in Clinical Practice and Research
Mark Boguski, MD, PhD, Beth Israel Deaconess Medical Center

Association of Pathology Chairs 2012 Annual Meeting

July 10-13, 2012

Monterey Plaza Hotel & Spa, Monterey, California

5:50 pm - 6:00 pm Q&A

6:00 pm - 9:00 pm **Reception, Exhibits**
[This is not a Continuing Medical Education activity]
The Dolphins, Upper Plaza

Wednesday, July 11, 2011

GENERAL INFORMATION:

7:00 am - 6:30 pm **Meeting Registration**
Cypress Ballroom Foyer, Lower Terrace

7:00 am - 6:30 pm **Exhibit Hours**
The Dolphins, Upper Plaza

8:30 am - 10:00 am **SPICE (Spouse and Guest) Group Meeting**
Schooners Coastal Kitchen and Bar, Lower Terrace

PROGRAM INFORMATION:

7:00 am - 8:00 am **PRODS ONLY – Breakfast**
Monterey Bay, Lower Terrace

Perspectives on HIT for Residency Programs
Jonas Almeida, PhD, University of Alabama
John Sinard, MD, PhD, Yale University
John Gilbertson, MD, Massachusetts General Hospital

8:00 am - 10:00 am **UMEDS/PRODS Joint Session**
Monterey Bay, Lower Terrace

8:00 am - 8:15 am Welcome/Overview
Suzanne Powell, MD, The Methodist Hospital System
Regina Gandour-Edwards, MD, University of California, Davis

8:15 am - 9:15 am The LCME and Educational Innovation: Best Practices
Barbara Barzansky, PhD, MHPE, American Medical Association

9:15 am - 10:00 am Moderated Questions/Discussion
Elaine Bearer, MD, PhD, University of New Mexico
Michael Prystowsky, MD, PhD, Albert Einstein College of Medicine

10:00 am - 10:30 am **Break, Exhibits**
[This is not a Continuing Medical Education activity]
The Dolphins, Upper Plaza

Association of Pathology Chairs 2012 Annual Meeting

July 10-13, 2012

Monterey Plaza Hotel & Spa, Monterey, California

- 10:30 am - 12:00 pm** **HIT/Informatics Thematic Program - Education**
Cypress Ballroom, Upper Terrace
- 10:30 am - 10:55 am Informatics as both a Subspecialty (and an intrinsic component of)
Pathology: The Structure and Curriculum of Informatics Fellowships and
Residencies
John Gilbertson, MD, Massachusetts General Hospital
- 10:55 am - 11:20 am Cutting-Edge Imaging Technology in Pathology: Whole Slide Imaging,
Telemicroscopy, and In-Vivo Microscopy
Guillermo Tearney, MD, PhD, Massachusetts General Hospital
- 11:20 am - 11:35 am Integrating Health Information Technology and Pathology Education: The
UC Davis Experience
Michael Hogarth, MD, University of California, Davis
Regina Gandour-Edwards, MD, University of California, Davis
- 11:35 am - 12:00 pm Q&A
- 12:00 pm - 1:30 pm** **PRODS Lunch**
[This is not a Continuing Medical Education activity]
Terrace, Upper Plaza
- PRODS Council Lunch Including New PRODS Members**
[This is not a Continuing Medical Education activity]
The Ocean Club, Upper Plaza
- 1:30 pm - 2:30 pm** **PRODS Plenary I**
Monterey Bay, Lower Terrace
- 1:30 pm - 2:00 pm American Board of Pathology Report with Introduction of New Incoming
Executive Vice President
Betsy Bennett, MD, PhD, American Board of Pathology
- 2:00 pm - 2:30 pm National Resident Matching Program – Report on the Match and SOAP
C. Bruce Alexander, MD, University of Alabama, Birmingham
- 2:30 pm - 3:00 pm** **PRODS Committee Meetings**
- 2:30 pm - 3:00 pm Ethics, Professionalism & Communication Committee
Monterey Bay, Lower Terrace
Suzanne Powell, MD, The Methodist Hospital System
Jacob J. Steinberg, MD, Albert Einstein College of Medicine

Association of Pathology Chairs 2012 Annual Meeting

July 10-13, 2012

Monterey Plaza Hotel & Spa, Monterey, California

- 2:30 pm - 3:00 pm Workforce, Employment & Training Committee
Big Sur 2 & 3, Lower Terrace
W. Stephen Black-Schaffer, MD, Massachusetts General Hospital
Robert Hoffman, MD, PhD, Vanderbilt University
- 2:30 pm - 3:00 pm Outcomes & Assessment Committee
Point Lobos 2, Lower Terrace
Wesley Naritoku, MD, PhD, University of Southern California
Gayle Winters, MD, Brigham & Women's Hospital
- 2:30 pm - 3:00 pm Education Innovation Committee
The Ocean Club, Upper Plaza
Phyllis Huettner, Washington University
Peter Kragel, MD, East Carolina University
- 3:00 pm - 3:30 pm** **Break, Exhibits**
[This is not a Continuing Medical Education activity]
The Dolphins, Upper Plaza
- 3:30 pm - 4:10 pm** **HIT/Informatics Thematic Program - Advocacy**
[This is not a Continuing Medical Education activity]
Cypress Ballroom, Lower Terrace
- 3:30 pm - 3:50 pm The National Perspective on Clinical Decision Support
Jacob Reider, MD, Acting Chief Medical Officer, Office of the National Coordinator for Health Information Technology
- 3:50 pm - 4:10 pm Opportunities for Pathology in HIT-Enabled Accountable Care
S. Lawrence Kocot, JD, LL.M, MPA, Deputy Director, Engelberg Center for Health Care Reform, The Brookings Institution
- 4:10 pm - 5:15 pm** **Cooperating Society Liaison Panel: Focused Responses to HIT and Informatics Issues**
Cypress Ballroom, Lower Terrace
- 4:10 pm - 4:15 pm ABP Liaison Response to Keynotes
Betsy Bennett, MD, PhD, The American Board of Pathology
- 4:15 pm - 4:20 pm ACLPS Liaison Response to Keynotes
Eric D. Spitzer, MD, PhD, SUNY at Stony Brook
- 4:20 pm - 4:25 pm ASCP Liaison Response to Keynotes
C. Bruce Alexander, MD, University of Alabama, Birmingham
- 4:25 pm - 4:30 pm ASIP Liaison Response to Keynotes
James Musser, MD, PhD, The Methodist Hospital System

Association of Pathology Chairs 2012 Annual Meeting

July 10-13, 2012

Monterey Plaza Hotel & Spa, Monterey, California

- 4:30 pm - 4:35 pm ADASP Liaison Response to Keynotes
Peter Humphrey, MD, PhD, Washington University
- 4:35 pm - 4:40 pm CAP Liaison Response to Keynotes
Stanley J. Robboy, MD, FCAP, FFPATH RCPI (hon), Duke University
- 4:40 pm - 4:45 pm USCAP Liaison Response to Keynotes
Linda Ferrell, MD, University of California, San Francisco
- 4:45 pm - 5:15 pm Q&A
- 5:15 pm - 6:30 pm Break, Exhibits**
[This is not a Continuing Medical Education activity]
The Dolphins, Upper Plaza
- 6:30 pm - 8:00 pm Opening Dinner**
Wine Sponsored by American Society for Clinical Pathology
(APC Diamond Partner)
[This is not a Continuing Medical Education activity]
Cypress Ballroom, Lower Terrace
- 7:15 pm - 7:20 pm Welcome/Moment of Silence/Sponsorship Acknowledgement
- 7:20 pm - 7:30 pm Undergraduate Medical Education Distinguished Teaching Award
Presentation
John Woosley, MD, PhD, University of North Carolina at Chapel Hill
- 7:30 pm - 7:40 pm Graduate Medical Education Distinguished Teaching Award Presentation
Betsy Bennett, MD, PhD, American Board of Pathology
- 7:40 pm - 8:00 pm APC Distinguished Service Award Presentations
Nelson Fausto, MD (posthumously)
Clive Taylor, MD, PhD, University of Southern California
- 8:00 pm - 9:00 pm Sunset Sweets (Dessert Social Outdoors - Weather Permitting)**
[This is not a Continuing Medical Education activity]
Terrace, Upper Plaza

Thursday, July 12, 2011

GENERAL INFORMATION:

- 7:00 am - 6:00 pm Meeting Registration**
Cypress Ballroom Foyer, Lower Terrace
- 7:00 am - 6:00 pm Exhibit Hours**
The Dolphins, Upper Plaza

Association of Pathology Chairs 2012 Annual Meeting

July 10-13, 2012

Monterey Plaza Hotel & Spa, Monterey, California

8:30 am - 10:00 am

SPICE (Spouse and Guest) Group Meeting

Schooners Coastal Kitchen and Bar, Lower Terrace

PROGRAM INFORMATION:

7:00 am - 8:00 am

Chairs/PRODS/UMEDS Breakfast

Cypress Ballroom, Lower Terrace

7:00 am - 8:00 am

LCME Update

Barbara Barzansky, PhD, MHPE, American Medical Association

8:00 am - 10:00 am

Joint Undergraduate and Graduate Medical Education Session

Cypress Ballroom, Lower Terrace

8:00 am - 8:30 am

Medical Student Education in Molecular and Genomic Pathology

Harry Ostrer, MD, Albert Einstein College of Medicine

8:30 am - 9:00 am

Resident and Fellow Education in Molecular and Genomic Pathology

Karen Kaul, MD, PhD, NorthShore University HealthSystem

9:00 am - 9:30 am

Molecular and Genomic Pathology: What Practicing Pathologists Will Need to Know

John Pfeifer, MD, PhD, Washington University

9:30 am - 10:00 am

Q&A with Discussion

10:00 am -10:30 am

Break, Exhibits

[This is not a Continuing Medical Education activity]

The Dolphins, Upper Plaza

10:30 am - 12:30 pm

PRODS Plenary III

Monterey Bay, Lower Terrace

10:30 am - 10:50 am

Pathology Residency Review Committee Report

Julia Iezzoni, MD, University of Virginia

10:50 am - 12:00 pm

Milestones Working Group Report

Wesley Naritoku, MD, PhD, University of Southern California

Steven Nestler, PhD, Accreditation Council for Graduate Medical Education

12:00 pm - 12:30 pm

Milestones Implementation – Interactive Discussion with GMEAS

Association of Pathology Chairs 2012 Annual Meeting

July 10-13, 2012

Monterey Plaza Hotel & Spa, Monterey, California

12:30 pm - 2:00 pm

Lunch/Discussion Groups

12:30 pm - 2:00 pm

Milestones

Point Lobos 1, Lower Terrace

Wesley Naritoku, MD, PhD, University of Southern California

Seena Aisner, MD, UMDNJ - New Jersey Medical School

Steven Nestler, PhD, Accreditation Council for Graduate Medical Education

12:30 pm - 2:00 pm

New Roles for Pathologists and New Payment Models

Cypress Ballroom, Lower Terrace

Donald Karcher, MD, George Washington University

James Crawford, MD, PhD, Hofstra North Shore- LIJ School of Medicine

W. Stephen Black-Schaffer, MD, Massachusetts General Hospital

Doug Toothman, MPA, PA, West Virginia University

Ira Sussman, MD, Albert Einstein College of Medicine

Marcia McCall, MBA, CPA, Wake Forest University

12:30 pm - 2:00 pm

Biorepositories

APC Office, Fairway Lower Terrace

Daniel Remick, MD, Boston University

Mark Sobel, MD, PhD, American Society for Investigative Pathology

12:30 pm - 2:00 pm

Pathology Education Funding (GME, UME, Pre- and Post-doctoral)

Big Sur 2 & 3, Lower Terrace

Robert Hoffman, MD, PhD, Vanderbilt University

Gayle Winters, MD, Brigham & Women's Hospital

Jennifer Hunt, MD, MEd, University of Arkansas

Michael Prystowsky, MD, PhD, Albert Einstein College of Medicine

12:30 pm - 2:00 pm

Faculty Certification, Recertification and Remediation

Point Lobos 2, Lower Terrace

Suzanne Powell, MD, The Methodist Hospital System

Betsy Bennett, MD, PhD, American Board of Pathology

Rebecca Johnson, MD, Berkshire Health Systems

Kymerly Gyure, MD, West Virginia University

12:30 pm - 2:00 pm

Methods for Effective Teaching of Laboratory Management during
Residency Training

Monterey Bay, Lower Terrace

Peter Jensen, MD, University of Utah

Ronald Weiss, MD, ARUP Laboratories

Christopher Stowell, MD, PhD, Massachusetts General Hospital

2:00 pm - 3:50 pm

PRODS Plenary IV

Monterey Bay, Lower Terrace

Association of Pathology Chairs 2012 Annual Meeting

July 10-13, 2012

Monterey Plaza Hotel & Spa, Monterey, California

2:00 pm - 3:00 pm Milestones and ACGME New Accreditation Summary Wrap-up with Q&A
Stephen Nestler, PhD, Accreditation Council for Graduate Medical Education
Linda Thorsen, MA, Accreditation Council for Graduate Medical Education

3:00 pm - 3:30 pm ASCP RISE Examination Update
Henry Rinder, MD, Yale University

3:30 pm - 3:50 pm Resident-Centered USCAP Activities
Bruce Smoller, MD, United States and Canadian Academy of Pathology

3:50 pm - 4:45 pm Business Meeting
[This is not a Continuing Medical Education activity]
Monterey Bay, Lower Terrace

3:50 pm - 4:45 pm PRODS Business Meeting
Presided by Suzanne Powell, MD, The Methodist Hospital System

4:45 pm - 6:00 pm Exhibits - "Last Call" Vendor Social with GMEAS Posters and Prize Drawing
[This is not a Continuing Medical Education activity]
The Dolphins, Upper Plaza

Friday, July 13, 2012

PROGRAM INFORMATION:

8:00 am - 9:30 am Breakfast/Joint Advocacy Session
Cypress Ballroom, Lower Terrace

8:00 am - 9:30 am Joint Advocacy Session (For All Attendees)
Daniel Remick, MD, Boston University

9:30 am - 10:30 am Laboratory Medicine and Management Training Forum
Cypress Ballroom, Lower Terrace

9:30 am - 9:40 am Update on the CDC Survey of Undergraduate Medical Education in
Laboratory Medicine
Brian Smith, MD, Yale University

9:40 am - 9:50 am Methods for Effective Teaching of Laboratory Management during
Residency Training
Ronald Weiss, MD, ARUP Laboratories
Christopher Stowell, MD, PhD, Massachusetts General Hospital

9:50 am - 10:00 am Addressing the Challenges of Training in 3 to 4 Years
Michael Laposata, MD, PhD, Vanderbilt University

Association of Pathology Chairs 2012 Annual Meeting

July 10-13, 2012

Monterey Plaza Hotel & Spa, Monterey, California

- 10:00 am - 10:10 am Evolving from Resident to Pathologist
Richard Horowitz, MD, Veterans Affairs Greater Los Angeles Healthcare System
- 10:10 am - 10:30 am Bridging the Chasm between Training and Practice: Preparing Students and Residents for Reality - A Moderated Panel Discussion
Christopher Stowell, MD, PhD, Massachusetts General Hospital
Michael Laposata, MD, PhD, Vanderbilt University
Richard Horowitz, MD, Veterans Affairs Greater Los Angeles Healthcare System
Brian Smith, MD, Yale University

10:30 am - 10:45 am Break
[This is not a Continuing Medical Education activity]

10:45 am - 12:15 pm PRODS Plenary V
Monterey Bay, Lower Terrace

10:45 am - 11:05 am CAP Resident Forum Report
Nicole Riddle, MD, University of Pennsylvania

11:05 am - 11:25 am ASCP Resident Council Report
Evelyn T. Bruner, MD, Medical University of South Carolina

11:25 am - 11:45 am AAMC-Organization of Resident Representatives Report
Danielle Carpenter, MD, Washington University

11:45 am - 12:15 pm ABP Recap with Q&A
Betsy Bennett, MD, PhD, American Board of Pathology

12:15 pm - 1:00 pm PRODS Farewell Lunch
[This is not a Continuing Medical Education activity]
Terrace, Upper Plaza

PRODS Program Adjourns at 1:00 pm

Association of Pathology Chairs 2012 Annual Meeting

July 10-13, 2012

Monterey Plaza Hotel & Spa, Monterey, California

NOTES:

Association of Pathology Chairs 2012 Annual Meeting

July 10-13, 2012

Monterey Plaza Hotel & Spa, Monterey, California

PDAS PROGRAM

Tuesday, July 10, 2012

GENERAL INFORMATION:

6:00 pm - 9:00 pm **Meeting Registration**
The Dolphins Foyer, Upper Plaza

6:00 pm - 9:00 pm **Exhibit Hours**
The Dolphins, Upper Plaza

PROGRAM INFORMATION:

3:00 pm - 6:00 pm **Health Information Technology Primer**
Cypress Ballroom, Lower Terrace

3:00 pm - 3:20 pm Basic Technology in Health Information Technology (HIT)
John Sinard, MD, PhD, Yale University

3:20 pm - 3:35 pm Interfaces, Middleware, Networks, Databases, etc.
John Sinard, MD, PhD, Yale University

3:35 pm - 3:55 pm Overview of the Laboratory Information Systems (LIS) and Electronic Health
Record (EHR) System
John Sinard, MD, PhD, Yale University

3:55 pm - 4:10 pm Basic Digital Imagery, Whole Slide Imaging, Telemicroscopy, etc.
John Sinard, MD, PhD, Yale University

4:10 pm - 4:20 pm HIT Security and Confidentiality
John Sinard, MD, PhD, Yale University

4:20 pm - 4:30 pm Q&A

4:30 pm - 4:50 pm Break (In Room)

4:50 pm - 5:10 pm Laboratory Data Formatting and Presentation
Rajesh Dash, MD, Duke University

5:10 pm - 5:25 pm Transmission and Warehousing of Laboratory and Pathology Data: Health
Information Exchanges
Rajesh Dash, MD, Duke University

5:25 pm - 5:50 pm Genomic Data Analysis in Clinical Practice and Research
Mark Boguski, MD, PhD, Beth Israel Deaconess Medical Center

Association of Pathology Chairs 2012 Annual Meeting

July 10-13, 2012

Monterey Plaza Hotel & Spa, Monterey, California

5:50 pm - 6:00 pm Q&A

6:00 pm - 9:00 pm **Reception, Exhibits**
[This is not a Continuing Medical Education activity]
The Dolphins, Upper Plaza

Wednesday, July 11, 2012

GENERAL INFORMATION:

7:00 am - 6:30 pm **Meeting Registration**
Cypress Ballroom Foyer, Lower Terrace

7:00 am - 6:30 pm **Exhibit Hours**
The Dolphins, Upper Plaza

8:30 am - 10:00 am **SPICE (Spouse and Guest) Group Meeting**
Schooners Coastal Kitchen and Bar, Lower Terrace

PROGRAM INFORMATION:

7:00 am - 8:00 am **Breakfast**
[This is not a Continuing Medical Education activity]
The Dolphins, Upper Plaza

8:00 am - 10:00 am **HIT/Informatics Thematic Program - Practice and Management**
Cypress Ballroom, Lower Terrace

8:00 am - 8:25 am The Evolution of the Laboratory Information System, the Factors that will
Impact the Next Generation LIS
John Gilbertson, MD, Massachusetts General Hospital

8:25 am - 8:45 am The Pathology World-View as a Cornerstone of the Next-Generation EHR:
Implications for Design, Procurement and Management
Ulysses Balis, MD, University of Michigan

8:45 am - 9:10 am Leveraging Pathology Informatics in the HIT evolution: Opportunities and
Positioning in the Health Care Marketplace
Philip Chen, MD, PhD, University of Miami

9:10 am - 9:30 am HIT and Informatics in the Accountable/Coordinated Care Era
James Crawford, MD, PhD, Hofstra North Shore-LIJ School of Medicine

9:30 am - 10:00 am Q&A

Association of Pathology Chairs 2012 Annual Meeting

July 10-13, 2012

Monterey Plaza Hotel & Spa, Monterey, California

10:00 am - 10:30 am	Break, Exhibits <i>[This is not a Continuing Medical Education activity]</i> The Dolphins, Upper Plaza
10:30 am - 12:00 pm	PDAS Session I <i>[This is not a Continuing Medical Education activity]</i> Carmel 1 & 2, Lower Terrace
10:30 am - 10:35 am	Introduction to PDAS Session: Technology <i>Martha Miers, MS, Vanderbilt University</i>
10:35 am - 11:15 am	LIS Software (AP, CP, and Molecular Diagnostics) <i>James Madory, DO, University of South Carolina</i>
11:15 am - 12:00 pm	Ephemeral Images, Indelible Data: The Promises and Challenges of Digital Imaging as Applied to Pathology <i>Ulysses Balis, MD, University of Michigan</i>
12:00 pm - 1:00 pm	Lunch - PDAS Business Meeting <i>[This is not a Continuing Medical Education activity]</i> Carmel 1 & 2, Lower Terrace
1:00 pm - 3:00 pm	PDAS Session II <i>[This is not a Continuing Medical Education activity]</i> Carmel 1 & 2, Lower Terrace
1:00 pm - 1:45 pm	Establishing a Collaborative Telepathology Laboratory with a Non-Profit Organ Procurement Organization: Lessons Learned...So Far <i>Billie Fyfe-Kirschner, MD, UMDNJ- Robert Wood Johnson Medical School</i>
1:45 pm - 2:00 pm	Imaging Technologies <i>Guillermo Tearney, MD, PhD, Massachusetts General Hospital</i>
2:00 pm - 2:30 pm	Cost/Reimbursement Impact with New Technologies <i>W. Stephen Black-Schaffer, MD, Massachusetts General Hospital</i>
2:30 pm - 3:00 pm	Discussion
3:00 pm - 3:30 pm	Break, Exhibits <i>[This is not a Continuing Medical Education activity]</i> The Dolphins, Upper Plaza
3:30 pm - 4:10 pm	HIT/Informatics Thematic Program - Advocacy <i>[This is not a Continuing Medical Education activity]</i> Cypress Ballroom, Lower Terrace

Association of Pathology Chairs 2012 Annual Meeting

July 10-13, 2012

Monterey Plaza Hotel & Spa, Monterey, California

- 3:30 pm - 3:50 pm The National Perspective on Clinical Decision Support
Jacob Reider, MD, Acting Chief Medical Officer, Office of the National Coordinator for Health Information Technology
- 3:50 pm - 4:10 pm Opportunities for Pathology in HIT-Enabled Accountable Care
S. Lawrence Kocot, JD, LLM, MPA, Deputy Director, Engelberg Center for Health Care Reform, The Brookings Institution
- 4:10 pm - 5:15 pm Cooperating Society Liaison Panel: Focused Responses to HIT and Informatics Issues**
Cypress Ballroom, Lower Terrace
- 4:10 pm - 4:15 pm ABP Liaison Response to Keynotes
Betsy Bennett, MD, PhD, The American Board of Pathology
- 4:15 pm - 4:20 pm ACLPS Liaison Response to Keynotes
Eric D. Spitzer, MD, PhD, SUNY at Stony Brook
- 4:20 pm - 4:25 pm ASCP Liaison Response to Keynotes
C. Bruce Alexander, MD, University of Alabama, Birmingham
- 4:25 pm - 4:30 pm ASIP Liaison Response to Keynotes
James Musser, MD, PhD, The Methodist Hospital System
- 4:30 pm - 4:35 pm ADASP Liaison Response to Keynotes
Peter Humphrey, MD, PhD, Washington University
- 4:35 pm - 4:40 pm CAP Liaison Response to Keynotes
Stanley J. Robboy, MD, FCAP, FFPATH RCPI (hon), Duke University
- 4:40 pm - 4:45 pm USCAP Liaison Response to Keynotes
Linda Ferrell, MD, University of California, San Francisco
- 4:45 pm - 5:15 pm Q&A
- 5:15 pm - 6:30 pm Break, Exhibits**
[This is not a Continuing Medical Education activity]
The Dolphins, Upper Plaza
- 6:30 pm - 8:00 pm Opening Dinner**
[This is not a Continuing Medical Education activity]
Monterey Bay, Lower Terrace
- 8:00 pm - 9:00 pm Sunset Sweets (Dessert Social Outdoors - Weather Permitting)**
[This is not a Continuing Medical Education activity]
Terrace, Upper Plaza

Association of Pathology Chairs 2012 Annual Meeting

July 10-13, 2012

Monterey Plaza Hotel & Spa, Monterey, California

Thursday, July 12, 2012

GENERAL INFORMATION:

- 7:00 am - 6:00 pm** **Meeting Registration**
Cypress Ballroom Foyer, Lower Terrace
- 7:00 am - 6:00 pm** **Exhibit Hours**
The Dolphins, Upper Plaza
- 8:30 am - 10:00 am** **SPICE (Spouse and Guest) Group Meeting**
Schooners Coastal Kitchen and Bar, Lower Terrace

PROGRAM INFORMATION:

- 7:00 am - 8:00 am** **Breakfast**
[This is not a Continuing Medical Education activity]
The Dolphins, Upper Plaza
- 8:00 am - 10:00 am** **PDAS Session III**
[This is not a Continuing Medical Education activity]
Carmel 1 & 2, Lower Terrace
- 8:00 am - 8:05 am Introduction to Session: HIT in Clinical Practice
Martha Miers, MS, Vanderbilt University
- 8:05 am - 8:45 am Managing Diagnostic Challenges in the Era of Personalized and Genomic
Medicine
Mary Zutter, MD, Vanderbilt University
- 8:45 am - 9:30 am The Diagnostic Management Team: Impact on Clinical Practice
Adam Seegmiller, MD, PhD, Vanderbilt University
- 9:30 am - 10:00 am Q&A, Discussion
- 10:00 am - 10:30 am** **Break, Exhibits**
[This is not a Continuing Medical Education activity]
The Dolphins, Upper Plaza
- 10:30 am - 12:30 pm** **Joint Practice and Management Session**
Cypress Ballroom, Lower Terrace
- 10:30 am - 11:00 am Introduction and Review of Survey
Barbara Ducatman, MD, West Virginia University
- 11:00 am - 11:15am Value of Survey Data for Departments
Martha Miers, MS, Vanderbilt University

Association of Pathology Chairs 2012 Annual Meeting

July 10-13, 2012

Monterey Plaza Hotel & Spa, Monterey, California

- 11:15 am - 11:30 am Q&A, Discussion
- 11:30 am - 11:45 am Resident and Fellowship Funding Issues
Suzanne Powell, MD, The Methodist Hospital System
- 11:45 am - 12:00 pm Pathology Departments and ACOs
James Crawford, MD, PhD, Hofstra North Shore-LIJ School of Medicine
- 12:00 pm - 12:15 pm Academic Health Center Integration and Pathology Funding Models
A. Julian Garvin, MD, PhD, Wake Forest University
- 12:15 pm - 12:30 pm Q&A, Discussion

12:30 pm - 2:00 pm Lunch/Discussion Groups

- 12:30 pm - 2:00 pm Part A Transfer – Professional Component Billing
The Ocean Club, Upper Plaza
J. Charles Jennette, MD, University of North Carolina at Chapel Hill
Kandice Marchant, MD, PhD, Cleveland Clinic
A. Julian Garvin, MD, PhD, Wake Forest University
Dani Zander, MD, Pennsylvania State College
Fred Gorstein, MD, Thomas Jefferson University
- 12:30 pm - 2:00 pm Benchmarking
Carmel 1 & 2, Lower Terrace
Barbara Ducatman, MD, West Virginia University
Martha Miers, MS, Vanderbilt University
Tristram Parslow, MD, PhD, Emory University
Robert Hunter, MD, PhD, University of Texas, Houston
Marjel Whitmore, MPA, Creighton University Medical Center
- 12:30 pm - 2:00 pm New Roles for Pathologists and New Payment Models
Cypress Ballroom, Lower Terrace
Donald Karcher, MD, George Washington University
James Crawford, MD, PhD, Hofstra North Shore- LIJ School of Medicine
W. Stephen Black-Schaffer, MD, Massachusetts General Hospital
Doug Toothman, MPA, PA, West Virginia University
Ira Sussman, MD, Albert Einstein College of Medicine
Marcia McCall, MBA, CPA, Wake Forest University
- 12:30 pm - 2:00 pm Biorepositories
APC Office, Fairway Lower Terrace
Daniel Remick, MD, Boston University
Mark Sobel, MD, PhD, American Society for Investigative Pathology

Association of Pathology Chairs 2012 Annual Meeting

July 10-13, 2012

Monterey Plaza Hotel & Spa, Monterey, California

12:30 pm - 2:00 pm Pathology Education Funding (GME, UME, Pre- and Post-doctoral)
Big Sur 2 & 3, Lower Terrace
Robert Hoffman, MD, PhD, Vanderbilt University
Gayle Winters, MD, Brigham & Women's Hospital
Jennifer Hunt, MD, MEd, University of Arkansas
Michael Prystowsky, MD, PhD, Albert Einstein Medical College

2:00 pm - 4:00 pm

PDAS Session IV

[This is not a Continuing Medical Education activity]

Carmel 1 & 2, Lower Terrace

2:00 pm - 2:05 pm Introduction to Session
Martha Miers, MS, Vanderbilt University

2:05 pm - 2:35 pm Bar-Coding and Closed Loop Systems for Patient ID
James Madory, DO, University of South Carolina

2:35 pm - 3:05 pm Why Barcode the AP Lab?
Rodney A. Schmidt, MD, PhD, University of Washington

3:05 pm - 3:45 pm Life beyond Meaningful Use and ACO – Strategies for Navigating through
the Healthcare (Financial) Reform to Emerge as a Winner
Philip Chen, MD, PhD, University of Miami

3:45 pm - 4:00 pm Discussion

4:00 pm - 6:00 pm

Exhibits - "Last Call" Vendor Social with Prize Drawing

[This is not a Continuing Medical Education activity]

The Dolphins, Upper Plaza

Friday, July 13, 2012

PROGRAM INFORMATION:

8:00 am - 9:30 am

Breakfast/Joint Advocacy Session

Cypress Ballroom, Lower Terrace

8:00 am - 9:30 am Joint Advocacy Session (For All Attendees)
Daniel Remick, MD, Boston University

9:30 am - 10:30 am

Laboratory Medicine and Management Training Forum

Cypress Ballroom, Lower Terrace

9:30 am - 9:40 am Update on the CDC Survey of Undergraduate Medical Education in
Laboratory Medicine
Brian Smith, MD, Yale University

Association of Pathology Chairs 2012 Annual Meeting

July 10-13, 2012

Monterey Plaza Hotel & Spa, Monterey, California

- 9:40 am - 9:50 am Methods for Effective Teaching of Laboratory Management during Residency Training
Christopher Stowell, MD, PhD, Massachusetts General Hospital
Ronald Weiss, MD, ARUP Laboratories
- 9:50 am - 10:00 am Addressing the Challenges of Training in 3 to 4 Years
Michael Laposata, MD, PhD, Vanderbilt University
- 10:00 am - 10:10 am Evolving from Resident to Pathologist
Richard Horowitz, MD, Veterans Affairs Greater Los Angeles Healthcare System
- 10:10 am - 10:30 am Bridging the Chasm between Training and Practice: Preparing Students and Residents for Reality - A Moderated Panel Discussion
Christopher Stowell, MD, PhD, Massachusetts General Hospital
Michael Laposata, MD, PhD, Vanderbilt University
Richard Horowitz, MD, Veterans Affairs Greater Los Angeles Healthcare System
Brian Smith, MD, Yale University
- 10:30 am - 10:45 am Break**
- 10:45 am - 1:00 pm PDAS Session V**
[This is not a Continuing Medical Education activity]
Carmel 1 & 2, Lower Terrace
- 10:45 am - 10:50 am Introduction to Session: Current Topics/Best Practices within PDAS
Martha Miers, MS, Vanderbilt University
- 10:50 am - 11:30 am Who Moved My Margin? Structural, Operational and Financial Transformation at Wake Forest Baptist Medical Center
Marcia McCall, MBA CPA, Wake Forest University
- 11:30 am - 12:15 pm Renovation 101, 102 and Beyond
David Wooster, Yale University
Judy Elleson, Iowa University
John Baci, Boston Children's Hospital
Beth Hansell, University of South Carolina
- 12:15 pm - 12:45 pm It's an Academic Affair
Kelley Suskie, MHSA, University of Arkansas
- 12:45 pm - 1:00 pm Wrap-up and Discussion
- 1:00 pm - 2:30 pm PDAS Farewell Lunch**
[This is not a Continuing Medical Education activity]
Terrace, Upper Plaza

Association of Pathology Chairs 2012 Annual Meeting

July 10-13, 2012

Monterey Plaza Hotel & Spa, Monterey, California

PDAS Council Lunch

[This is not a Continuing Medical Education activity]

John Steinbeck, Lower Terrace

PDAS Program Adjourns at 2:30 pm

Association of Pathology Chairs 2012 Annual Meeting

July 10-13, 2012

Monterey Plaza Hotel & Spa, Monterey, California

NOTES:

Association of Pathology Chairs 2012 Annual Meeting

July 10-13, 2012

Monterey Plaza Hotel & Spa, Monterey, California

UMEDS PROGRAM

Tuesday, July 10, 2012

GENERAL INFORMATION:

6:00 pm - 9:00 pm **Meeting Registration**
The Dolphins Foyer, Upper Plaza

6:00 pm - 9:00 pm **Exhibit Hours**
The Dolphins, Upper Plaza

PROGRAM INFORMATION:

3:00 pm - 6:00 pm **Health Information Technology Primer**
Cypress Ballroom, Lower Terrace

3:00 pm - 3:20 pm Basic Technology in Health Information Technology (HIT)
John Sinard, MD, PhD, Yale University

3:20 pm - 3:35 pm Interfaces, Middleware, Networks, Databases, etc.
John Sinard, MD, PhD, Yale University

3:35 pm - 3:55 pm Overview of the Laboratory Information Systems (LIS) and Electronic Health
Record (EHR) System
John Sinard, MD, PhD, Yale University

3:55 pm - 4:10 pm Basic Digital Imagery, Whole Slide Imaging, Telemicroscopy, etc.
John Sinard, MD, PhD, Yale University

4:10 pm - 4:20 pm HIT Security and Confidentiality
John Sinard, MD, PhD, Yale University

4:20 pm - 4:30 pm Q&A

4:30 pm - 4:50 pm Break (In Room)

4:50 pm - 5:10 pm Laboratory Data Formatting and Presentation
Rajesh Dash, MD, Duke University

5:10 pm - 5:25 pm Transmission and Warehousing of Laboratory and Pathology Data: Health
Information Exchanges
Rajesh Dash, MD, Duke University

5:25 pm - 5:50 pm Genomic Data Analysis in Clinical Practice and Research
Mark Boguski, MD, PhD, Beth Israel Deaconess Medical Center

Association of Pathology Chairs 2012 Annual Meeting

July 10-13, 2012

Monterey Plaza Hotel & Spa, Monterey, California

5:50 pm - 6:00 pm Q&A

6:00 pm - 9:00 pm **Reception, Exhibits**
[This is not a Continuing Medical Education activity]
The Dolphins, Upper Plaza

Wednesday, July 11, 2012

GENERAL INFORMATION:

7:00 am - 6:30 pm **Meeting Registration**
Cypress Ballroom Foyer, Lower Terrace

7:00 am - 6:30 pm **Exhibit Hours**
The Dolphins, Upper Plaza

8:30 am - 10:00 am **SPICE (Spouse and Guest) Group Meeting**
Schooners Coastal Kitchen and Bar, Lower Terrace

PROGRAM INFORMATION:

7:00 am - 8:00 am **Breakfast**
[This is not a Continuing Medical Education activity]
The Dolphins, Upper Plaza

8:00 am - 10:00 am **UMEDS/PRODS Joint Session**
Monterey Bay, Lower Terrace

8:00 am - 8:15 am Welcome/Overview
Suzanne Powell, MD, *The Methodist Hospital System*
Regina Gandour-Edwards, MD, *University of California, Davis*

8:15 am - 9:15 am The LCME and Educational Innovation: Best Practices
Barbara Barzansky, PhD, MHPE, *American Medical Association*

9:15 am - 10:00 am Moderated Questions/Discussion
Elaine Bearer, MD, PhD, *University of New Mexico*
Michael Prystowsky, MD, PhD, *Albert Einstein College of Medicine*

10:00 am - 10:30 am **Break, Exhibits**
[This is not a Continuing Medical Education activity]
The Dolphins, Upper Plaza

10:30 am - 12:00 pm **HIT/Informatics Thematic Program - Education**
Cypress Ballroom, Lower Terrace

Association of Pathology Chairs 2012 Annual Meeting

July 10-13, 2012

Monterey Plaza Hotel & Spa, Monterey, California

- 10:30 am - 10:55 am Informatics as Both a Subspecialty (and an Intrinsic Component of)
Pathology: The Structure and Curriculum of Informatics Fellowships and
Residencies
John Gilbertson, MD, Massachusetts General Hospital
- 10:55 am - 11:20 am Cutting-Edge Imaging Technology in Pathology: Whole Slide Imaging,
Telemicroscopy, and In-Vivo Microscopy
Guillermo Tearney, MD, PhD, Massachusetts General Hospital
- 11:20 am - 11:35 am Integrating Health Information Technology and Pathology Education: The
UC Davis Experience
Michael Hogarth, MD, University of California, Davis
Regina Gandour-Edwards, MD, University of California, Davis
- 11:35 am - 12:00 pm Q&A
- 12:00 pm - 1:00 pm** **UMEDS Lunch**
[This is not a Continuing Medical Education activity]
Point Lobos 1, Lower Terrace
- 1:00 pm - 3:00 pm** **UMEDS Plenary II**
Point Lobos 2, Lower Terrace
- 1:00 pm - 1:20 pm Course Director Workshop on Integrated Curriculum: Case Study (USUHS)
*Richard Conran, MD, PhD, JD, Uniformed Services University of the Health
Sciences*
- 1:20 pm - 1:40 pm Course Director Workshop on Integrated Curriculum: Case Study (UNC -
Chapel Hill)
Howard Reisner, PhD, University of North Carolina at Chapel Hill
- 1:40 pm - 2:00 pm Course Director Workshop on Integrated Curriculum: Case Study (UMDNJ -
Robert Wood Johnson Medical School)
David Weissman, MD PhD, UMDNJ-Robert Wood Johnson Medical School
- 2:00 pm - 2:20 pm Course Director Workshop on Integrated Curriculum: Case Study (Hofstra)
David Elkowitz, DO, North Shore University Hospital
- 2:20 pm - 2:40 pm A Scheme-Based Approach to Medical Education
Robert Kirk Baston, MD, Texas Tech University
- 2:40 pm - 3:00 pm Discussion
- 3:00 pm - 3:30 pm** **Break, Exhibits**
[This is not a Continuing Medical Education activity]
The Dolphins, Upper Plaza

Association of Pathology Chairs 2012 Annual Meeting

July 10-13, 2012

Monterey Plaza Hotel & Spa, Monterey, California

- 3:30 pm - 5:00 pm** **UMEDS Plenary III**
Point Lobos 2, Lower Terrace
- 3:30 pm - 5:00 pm New Approaches at OSU for Integrating Pathology in all Four Years of
Medical School and Moderated Discussion
Charles Hitchcock, MD, PhD, The Ohio State University
- 5:00 pm - 6:30pm** **Break, Exhibits**
[This is not a Continuing Medical Education activity]
The Dolphins, Upper Plaza
- 6:30 pm - 8:00 pm** **Opening Dinner**
Wine Sponsored by American Society for Clinical Pathology
(APC Diamond Partner)
[This is not a Continuing Medical Education activity]
Cypress Ballroom, Lower Terrace
- 7:15 pm - 7:20 pm Welcome/Moment of Silence/Sponsorship Acknowledgement
- 7:20 pm - 7:30 pm Undergraduate Medical Education Distinguished Teaching Award
Presentation
John Woosley, MD, PhD, University of North Carolina at Chapel Hill
- 7:30 pm - 7:40 pm Graduate Medical Education Distinguished Teaching Award Presentation
Betsy Bennett, MD, PhD, American Board of Pathology
- 7:40 pm - 8:00 pm APC Distinguished Service Award Presentations
Nelson Fausto, MD (posthumously)
Clive Taylor, MD, PhD, University of Southern California
- 8:00 pm - 9:00 pm** **Sunset Sweets (Dessert Social Outdoors - Weather Permitting)**
[This is not a Continuing Medical Education activity]
Terrace, Upper Plaza

Thursday, July 12, 2012

GENERAL INFORMATION:

- 7:00 am - 6:00 pm** **Meeting Registration**
Cypress Ballroom Foyer, Lower Terrace
- 7:00 am - 6:00 pm** **Exhibit Hours**
The Dolphins, Upper Plaza
- 8:30 am - 10:00 am** **SPICE (Spouse and Guest) Group Meeting**
Schooners Coastal Kitchen and Bar, Lower Terrace

Association of Pathology Chairs 2012 Annual Meeting

July 10-13, 2012

Monterey Plaza Hotel & Spa, Monterey, California

PROGRAM INFORMATION:

7:00 am - 8:00 am	Chairs/UMEDS/PRODS Breakfast Cypress Ballroom, Lower Terrace
7:00 am - 8:00 am	LCME Update <i>Barbara Barzansky, PhD, MHPE, American Medical Association</i>
8:00 am - 10:00 am	Joint Undergraduate and Graduate Medical Education Session Cypress Ballroom, Lower Terrace
8:00 am - 8:30 am	Medical Student Education in Molecular and Genomic Pathology <i>Harry Ostrer, MD, Albert Einstein College of Medicine</i>
8:30 am - 9:00 am	Resident and Fellow Education in Molecular and Genomic Pathology <i>Karen Kaul, MD, PhD, NorthShore University HealthSystem</i>
9:00 am - 9:30 am	Molecular and Genomic Pathology: What Practicing Pathologists Will Need to Know <i>John Pfeifer, MD, PhD, Washington University</i>
9:30 am - 10:00 am	Q&A
10:00 am - 10:30 am	Break, Exhibits <i>[This is not a Continuing Medical Education activity]</i> The Dolphins, Upper Plaza
10:30 am - 11:30 am	UMEDS Plenary IV Point Lobos 2, Lower Terrace
10:30 am - 10:50 am	Overview of Current Electronic Resources for Pathology Education <i>Howard Reisner, PhD, University of North Carolina at Chapel Hill</i>
10:50 am - 11:20 am	Medical Librarian's Perspective on Electronic Resources <i>Elizabeth Lorbeer, University of Alabama, Birmingham</i>
11:20 am - 11:30 am	Discussion
11:30 am - 12:30 pm	Business Meeting <i>[This is not a Continuing Medical Education activity]</i> Point Lobos 2, Lower Terrace
11:30 am - 12:30 pm	UMEDS Business Meeting <i>Presided by Regina Gandour-Edwards, MD, University of California, Davis</i>

Association of Pathology Chairs 2012 Annual Meeting

July 10-13, 2012

Monterey Plaza Hotel & Spa, Monterey, California

12:30 pm - 2:00 pm

Lunch/Discussion Groups

12:30 pm - 2:00 pm

UME/LCME: Stayin' Alive
John Steinbeck, Lower Terrace
J. Allan Tucker, MD, University of South Alabama
Regina Gandour-Edwards, MD, University of California, Davis
Robert Reddick, MD, University of Texas Health Science Center

12:30 pm - 2:00 pm

Biorepositories
APC Office, Fairway Lower Terrace
Daniel Remick, MD, Boston University
Mark Sobel, MD, PhD, American Society for Investigative Pathology

12:30 pm - 2:00 pm

Pathology Education Funding (GME, UME, Pre- and Post-doctoral)
Big Sur 2 & 3, Lower Terrace
Robert Hoffman, MD, PhD, Vanderbilt University
Gayle Winters, MD, Brigham & Women's Hospital
Jennifer Hunt, MD, MEd, University of Arkansas
Michael Prystowsky, MD, PhD, Albert Einstein College of Medicine

12:30 pm - 2:00 pm

Milestones
Point Lobos 1, Lower Terrace
Wesley Naritoku, MD, PhD, University of Southern California
Seena Aisner, MD, UMDNJ - New Jersey Medical School
Steven Nestler, PhD, Accreditation Council for Graduate Medical Education

UMEDS 2-Day Program Adjourns at 2:00 pm

UMEDS 3-day Program Continues:

2:00 pm - 4:00 pm

Networking Break or PRODS Programming
The Dolphins, Upper Plaza

4:00 pm - 6:00 pm

Exhibits - "Last Call" Vendor Social with Prize Drawing
[This is not a Continuing Medical Education activity]
The Dolphins, Upper Plaza

Friday, July 13, 2012

PROGRAM INFORMATION:

8:00 am - 9:30 am

Breakfast/Joint Advocacy Session
Cypress Ballroom, Lower Terrace

8:00 am - 9:30 am

Joint Advocacy Session (For All Attendees)
Daniel Remick, MD, Boston University

Association of Pathology Chairs 2012 Annual Meeting

July 10-13, 2012

Monterey Plaza Hotel & Spa, Monterey, California

9:30 am - 10:30 am

Laboratory Medicine & Management Training Forum

Cypress Ballroom, Lower Terrace

9:30 am - 9:40 am

Update on the CDC Survey of Undergraduate Medical Education in Laboratory Medicine

Brian Smith, MD, Yale University

9:40 am - 9:50 am

Methods for Effective Teaching of Laboratory Management during Residency Training

Christopher Stowell, MD, PhD, Massachusetts General Hospital

Ronald Weiss, MD, ARUP Laboratories

9:50 am - 10:00 am

Addressing the Challenges of Training in 3 to 4 Years

Michael Laposata, MD, PhD, Vanderbilt University

10:00 am - 10:10 am

Evolving from Resident to Pathologist

Richard Horowitz, MD, Veterans Affairs Greater Los Angeles Healthcare System

10:10 am - 10:30 am

Bridging the Chasm between Training and Practice: Preparing Students and Residents for Reality - A Moderated Panel Discussion

Christopher Stowell, MD, PhD, Massachusetts General Hospital

Michael Laposata, MD, PhD, Vanderbilt University

Richard Horowitz, MD, Veterans Affairs Greater Los Angeles Healthcare System

Brian Smith, MD, Yale University

UMEDS 3-day Program Continues with PRODS Programming

10:30 am - 10:45 am

Break

[This is not a Continuing Medical Education activity]

10:45 am - 12:15 pm

PRODS Plenary V

Monterey Bay, Lower Terrace

10:45 am - 11:05 am

CAP Resident Forum Report

Nicole Riddle, MD, University of Pennsylvania

11:05 am - 11:25 am

ASCP Resident Council Report

Evelyn T. Bruner, MD, Medical University of South Carolina

11:25 am - 11:45 am

AAMC-Organization of Resident Representatives Report

Danielle Carpenter, MD, Washington University

11:45 am - 12:15 pm

ABP Recap with Q&A

Betsy Bennett, MD, PhD, American Board of Pathology

Association of Pathology Chairs 2012 Annual Meeting

July 10-13, 2012

Monterey Plaza Hotel & Spa, Monterey, California

12:15 pm - 1:30 pm

UMEDS Farewell Lunch

[This is not a Continuing Medical Education activity]

Terrace, Upper Plaza

UMEDS 3-Day Program Adjourns at 1:30 pm

Association of Pathology Chairs 2012 Annual Meeting

July 10-13, 2012

Monterey Plaza Hotel & Spa, Monterey, California

GMEAS PROGRAM

Tuesday, July 10, 2012

GENERAL INFORMATION:

6:00 pm - 9:00 pm **Meeting Registration**
The Dolphins Foyer, Upper Plaza

6:00 pm - 9:00 pm **Exhibit Hours**
The Dolphins, Upper Plaza

PROGRAM INFORMATION:

3:00 pm - 6:00 pm **Health Information Technology Primer**
Cypress Ballroom, Lower Terrace

3:00 pm - 3:20 pm Basic Technology in Health Information Technology (HIT)
John Sinard, MD, PhD, Yale University

3:20 pm - 3:35 pm Interfaces, Middleware, Networks, Databases, etc.
John Sinard, MD, PhD, Yale University

3:35 pm - 3:55 pm Overview of the Laboratory Information Systems (LIS) and Electronic Health
Record (EHR) System
John Sinard, MD, PhD, Yale University

3:55 pm - 4:10 pm Basic Digital Imagery, Whole Slide Imaging, Telemicroscopy, etc.
John Sinard, MD, PhD, Yale University

4:10 pm - 4:20 pm HIT Security and Confidentiality
John Sinard, MD, PhD, Yale University

4:20 pm - 4:30 pm Q&A

4:30 pm - 4:50 pm Break (In Room)

4:50 pm - 5:10 pm Laboratory Data Formatting and Presentation
Rajesh Dash, MD, Duke University

5:10 pm - 5:25 pm Transmission and Warehousing of Laboratory and Pathology Data: Health
Information Exchanges
Rajesh Dash, MD, Duke University

5:25 pm - 5:50 pm Genomic Data Analysis in Clinical Practice and Research
Mark Boguski, MD, PhD, Beth Israel Deaconess Medical Center

Association of Pathology Chairs 2012 Annual Meeting

July 10-13, 2012

Monterey Plaza Hotel & Spa, Monterey, California

5:50 pm - 6:00 pm Q&A

6:00 pm - 9:00 pm **Reception, Exhibits**
[This is not a Continuing Medical Education activity]
The Dolphins, Upper Plaza

Wednesday, July 11, 2012

GENERAL INFORMATION:

7:00 am - 6:30 pm **Meeting Registration**
Cypress Ballroom Foyer, Lower Terrace

7:00 am - 6:30 pm **Exhibit Hours**
The Dolphins, Upper Plaza

8:30 am - 10:00 am **SPICE (Spouse and Guest) Group Meeting**
Schooners Coastal Kitchen and Bar, Lower Terrace

PROGRAM INFORMATION:

7:00 am - 8:00 am **Breakfast**
[This is not a Continuing Medical Education activity]
The Dolphins, Upper Plaza

8:00 am - 10:00 am **GMEAS Session I**
[This is not a Continuing Medical Education activity]
Robert Louis Stevenson 1 & 2, Lower Terrace

8:00 am - 9:30 am The Paperless (Almost) Admin Office
Michelle Rickard, University of Washington

9:30 am - 10:00 am The Paperless (Almost) Admin Office - E-Value Break Out Group
Kathleen Warfield, University of Maryland

9:30 am - 10:00 am The Paperless (Almost) Admin Office - MedHub Break Out Group
Michelle Rickard, University of Washington

9:30 am - 10:00 am The Paperless (Almost) Admin Office – Innovations Break Out Group
Jeanne Lay, University of New Mexico

10:00 am - 10:30 am **Break, Exhibits**
[This is not a Continuing Medical Education activity]
The Dolphins, Upper Plaza

10:30 am - 12:00 pm **HIT/Informatics Thematic Program - Education**
Cypress Ballroom, Lower Terrace

Association of Pathology Chairs 2012 Annual Meeting

July 10-13, 2012

Monterey Plaza Hotel & Spa, Monterey, California

- 10:30 am - 10:55 am Informatics as Both a Subspecialty (and an Intrinsic Component of) Pathology: The Structure and Curriculum of Informatics Fellowships and Residencies
John Gilbertson, MD, Massachusetts General Hospital
- 10:55 am - 11:20 am Cutting-Edge Imaging Technology in Pathology: Whole Slide Imaging, Telemicroscopy, and In-Vivo Microscopy
Guillermo Tearney, MD, PhD, Massachusetts General Hospital
- 11:20 am - 11:35 am Integrating Health Information Technology and Pathology Education: The UC Davis Experience
Michael Hogarth, MD, University of California, Davis
Regina Gandour-Edwards, MD, University of California, Davis
- 11:35 am - 12:00 pm Q&A
- 12:00 pm - 1:30 pm** **GMEAS Lunch/Committee Meetings**
[This is not a Continuing Medical Education activity]
Robert Louis Stevenson 1 & 2, Lower Terrace
- 1:30 pm - 2:30 pm** **PRODS Plenary I**
Monterey Bay, Lower Terrace
- 1:30 pm - 2:00 pm American Board of Pathology Report with Introduction of New Incoming Executive Vice President
Betsy Bennett, MD, PhD, American Board of Pathology
- 2:00 pm - 2:30 pm National Resident Matching Program – Report on the Match and SOAP
C. Bruce Alexander, MD, University of Alabama, Birmingham
- 2:30 pm - 3:30 pm** **Break, Exhibits & Networking**
[This is not a Continuing Medical Education activity]
The Dolphins, Upper Plaza
- 3:30 pm - 5:00 pm** **GMEAS Session II**
[This is not a Continuing Medical Education activity]
Robert Louis Stevenson 1 & 2, Lower Terrace
- 3:30 pm - 4:30 pm Creating Effective Checklists: A Book Club Discussion and Workshop Based on “The Checklist Manifesto: How to Get Things Right” by Atul Gawande
Allison Jones, Georgetown University
- 4:30 pm - 5:00 pm SOAP: Washing the SCRAMBLE Right Out of My Hair!
Betsy McDonald, University of Rochester

Association of Pathology Chairs 2012 Annual Meeting

July 10-13, 2012

Monterey Plaza Hotel & Spa, Monterey, California

5:00 pm - 5:30 pm Meet the New PRODS Chair & Chair-Elect
Wesley Naritoku, MD, PhD, University of Southern California
Gayle Winters, MD, Brigham and Women's Hospital

5:30 pm - 6:30 pm **Break, Exhibits**
[This is not a Continuing Medical Education activity]
The Dolphins, Upper Plaza

6:30 pm - 8:00 pm **Opening Dinner**
[This is not a Continuing Medical Education activity]
Monterey Bay, Lower Terrace

8:00 pm - 9:00 pm **Sunset Sweets (Dessert Social Outdoors - Weather Permitting)**
[This is not a Continuing Medical Education activity]
Terrace, Upper Plaza

Thursday, July 12, 2012

GENERAL INFORMATION:

7:00 am - 6:00 pm **Meeting Registration**
Cypress Ballroom Foyer, Lower Terrace

7:00 am - 6:00 pm **Exhibit Hours**
The Dolphins, Upper Plaza

8:30 am - 10:00 am **SPICE (Spouse and Guest) Group Meeting**
Schooners Coastal Kitchen and Bar, Lower Terrace

PROGRAM INFORMATION:

7:00 am - 8:00 am **Breakfast**
[This is not a Continuing Medical Education activity]
The Dolphins, Upper Plaza

8:00 am - 10:00 am **GMEAS Session III**
[This is not a Continuing Medical Education activity]
Robert Louis Stevenson 1 & 2, Lower Terrace

8:00 am - 9:15 am House Staff Wellness - Small Group Discussion
Allison Jones, Georgetown University

8:00 am - 9:15 am Alumni Relations - Small Group Discussion
Amy Motta, University of Utah

8:00 am - 9:15 am Coordinator Job Description - Small Group Discussion
Jeanne Lay, University of New Mexico

Association of Pathology Chairs 2012 Annual Meeting

July 10-13, 2012

Monterey Plaza Hotel & Spa, Monterey, California

- 9:15 am - 10:00 am Small Group Presentations
- 10:00 am - 10:30 am** **Break, Exhibits**
[This is not a Continuing Medical Education activity]
The Dolphins, Upper Plaza
- 10:30 am - 12:30 pm** **PRODS Plenary III**
Monterey Bay, Lower Terrace
- 10:30 am - 10:50 am Pathology Residency Review Committee Report
Julia Iezzoni, MD, University of Virginia
- 10:50 am - 12:00 pm Milestones Working Group Report
Wesley Naritoku, MD, PhD, University of Southern California
Stephen Nestler, PhD, Accreditation Council for Graduate Medical Education
- 12:00 pm - 12:30 pm Milestones Implementation – Interactive Discussion with GMEAS
- 12:30 pm - 2:00 pm** **Lunch/GMEAS Ask-the-Experts Panel**
[This is not a Continuing Medical Education activity]
Robert Louis Stevenson 1 & 2
Michelle Rickard, University of Washington
Lisa LaChance, Louisiana State University, Shreveport
Kathleen Warfield, University of Maryland
Amy Motta, University of Utah
- 2:00 pm - 3:50 pm** **PRODS Plenary IV**
Monterey Bay, Lower Terrace
- 2:00 pm - 3:00 pm Milestones and ACGME New Accreditation Summary Wrap – Up with Q&A
Stephen Nestler, PhD, Accreditation Council for Graduate Medical Education
Linda Thorsen, MA, Accreditation Council for Graduate Medical Education
- 3:00 pm - 3:30 pm ASCP RISE Examination Update
Henry Rinder, MD, Yale University
- 3:30 pm - 3:50 pm Resident-Centered USCAP Activities
Bruce Smoller, MD, United States and Canadian Academy of Pathology
- 3:50 pm - 4:30 pm** **GMEAS Poster Preparation**
[This is not a Continuing Medical Education activity]
The Dolphins, Upper Plaza
- 4:30 pm - 6:00 pm** **Exhibits - "Last Call" Vendor Social with GMEAS Posters and Prize Drawing**
[This is not a Continuing Medical Education activity]
The Dolphins, Upper Plaza
- 6:00 pm +** **Dinner – GMEAS Dine-Out Groups (Meet in Lobby)**

Association of Pathology Chairs 2012 Annual Meeting

July 10-13, 2012

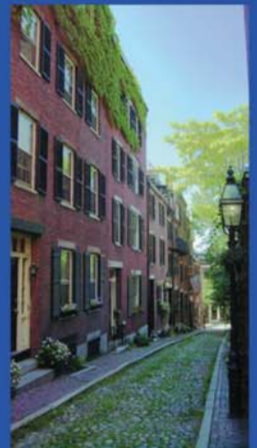
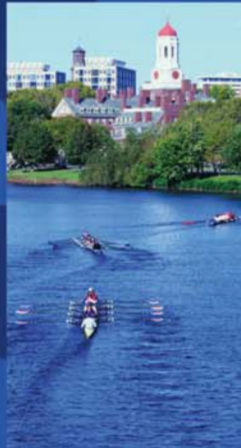
Monterey Plaza Hotel & Spa, Monterey, California

Friday, July 13, 2012

PROGRAM INFORMATION:

- 8:00 am - 10:30 am** **Breakfast/GMEAS Session IV**
[This is not a Continuing Medical Education activity]
Robert Louis Stevenson 1 & 2, Lower Terrace
- 8:00 am - 8:30 am Breakfast Service
- 8:30 am - 10:30 am Leveraging Electronic Media
Christopher Williams, Emory University
- 10:30 am - 10:45 am** **Break**
[This is not a Continuing Medical Education activity]
- 10:45 am - 12:15 pm** **PRODS Plenary V**
Monterey Bay, Lower Terrace
- 10:45 am - 11:05 am CAP Resident Forum Report
Nicole Riddle, MD, University of Pennsylvania
- 11:05 am - 11:25 am ASCP Resident Council Report
Evelyn T. Bruner, MD, Medical University of South Carolina
- 11:25 am - 11:45 am AAMC - Organization of Resident Representatives Report
Danielle Carpenter, MD, Washington University
- 11:45 am - 12:15 pm ABP Recap with Q&A
Betsy Bennett, MD, PhD, American Board of Pathology
- 12:15 pm - 1:30 pm** **GMEAS Lunch**
[This is not a Continuing Medical Education activity]
Robert Louis Stevenson 1 & 2, Lower Terrace
- 1:30 pm - 3:00 pm** **Business Meeting (Live and via-Go-To-Meeting)**
[This is not a Continuing Medical Education activity]
Robert Louis Stevenson 1 & 2, Lower Terrace
- 1:30 pm - 3:00 pm GMEAS Business Meeting
Presided by Michelle Rickard, University of Washington

GMEAS Program Adjourns at 3:00 pm



Association of Pathology Chairs APC 2013 Meeting

July 10-12, 2013

Seaport Boston Hotel - Boston, Massachusetts

Save the date and plan to attend the APC 2013 Annual Meeting. The Program Directors Section (PRODS), the Pathology Department Administrators Section (PDAS), the Undergraduate Medical Educators Section (UMEDS), and the Pathology Program Coordinators (GMEAS) will meet concurrently and in overlapping sessions of mutual interest with the Chairs. Network with your professional peers in a unique environment created solely for the exchange of information and ideas focused on academic pathology.



www.apcprods.org





American Society for
Clinical Pathology

2012 ASCP ANNUAL MEETING

Real Science. Real Life.

Boston | Oct. 31 - Nov. 3

Hynes Convention Center and Sheraton Boston Hotel

**Announcing the most impressive keynote speaker series
ever assembled for the ASCP Annual Meeting!**



**Ashley
Judd**



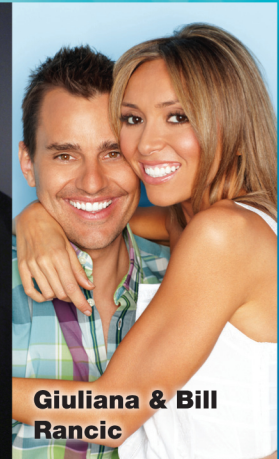
**Laura W.
Bush**



**Barbara
Bush**



**Donald
Berwick, MD**



**Giuliana & Bill
Rancic**

Six people who will share their stories that show how
real science has changed real lives around the world.

Register online: www.ascp.org/2012annualmeeting